



# CITY OF AMES

**AMES  
CITIZENS**

**CONFERENCE  
BOARD**

**City Assessor**

**HOSPITAL BOARD**

**Mary Greeley  
Medical Center**

**MAYOR &  
CITY COUNCIL**

**City Manager**

**Legal**

**TRANSIT BOARD**

**CyRide**

**LIBRARY BOARD OF  
TRUSTEES**

**Library**

**Assistant  
City Manager**

**Assistant  
City Manager**

**Fleet  
Services**

**Parks &  
Recreation**

**Water and  
Pollution  
Control**

**City Clerk**

**Communications  
and Outreach**

**Electric**

**Finance**

**Fire**

**Human  
Resources**

**Police**

**Planning  
& Housing**

**Public Works**

Administration  
Maintenance Program  
Replacement Program  
Facilities

Administration  
Ames/ISU Ice Arena  
Aquatics  
Cemetery  
Community Center  
Homewood Golf Course  
Parks Maintenance  
Forestry

Administration  
Water Plant  
Water Pollution Control Plant  
Water Meter  
Laboratory Services

Print Shop

Administration  
Distribution  
Engineering  
Tech Services  
Production  
Energy Markets

Administration  
Accounting  
Customer Services  
Meter Reader  
Information Services  
Purchasing

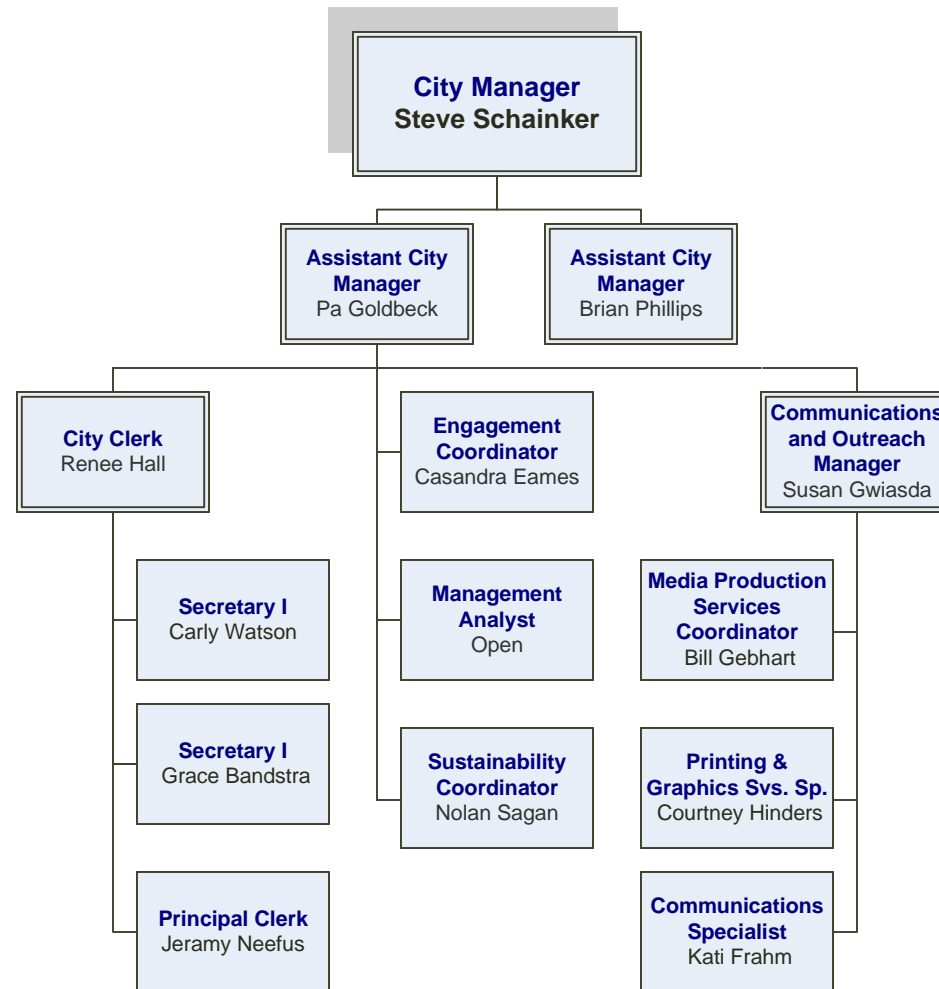
Fire Station #1  
Fire Station #2  
Fire Station #3  
Administration  
Inspections  
Prevention  
Sanitation  
Support Services

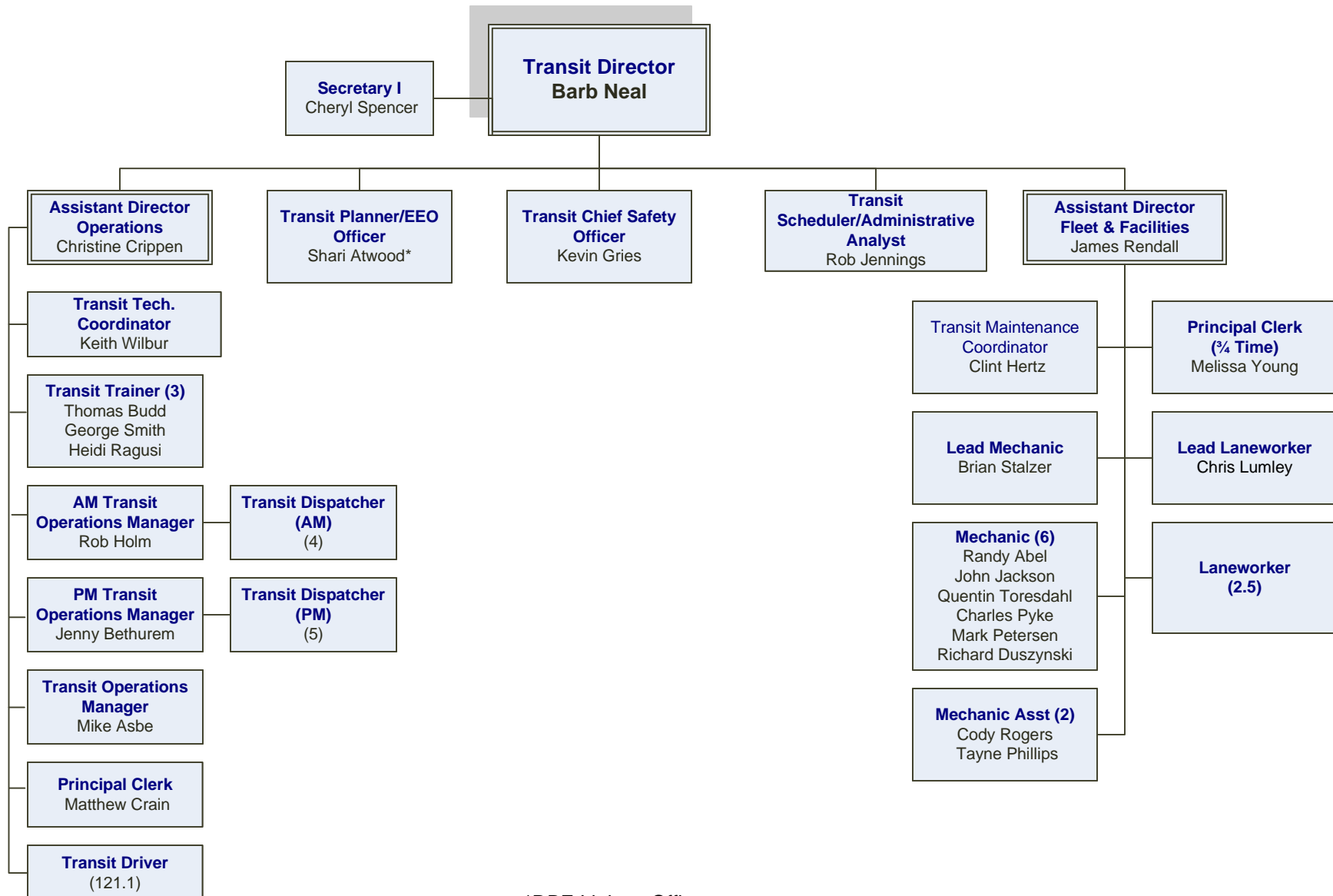
Health Promotion  
Risk Management

Patrol  
Criminal Investigation  
Support Services  
Animal Control & Shelter

Housing  
Planning

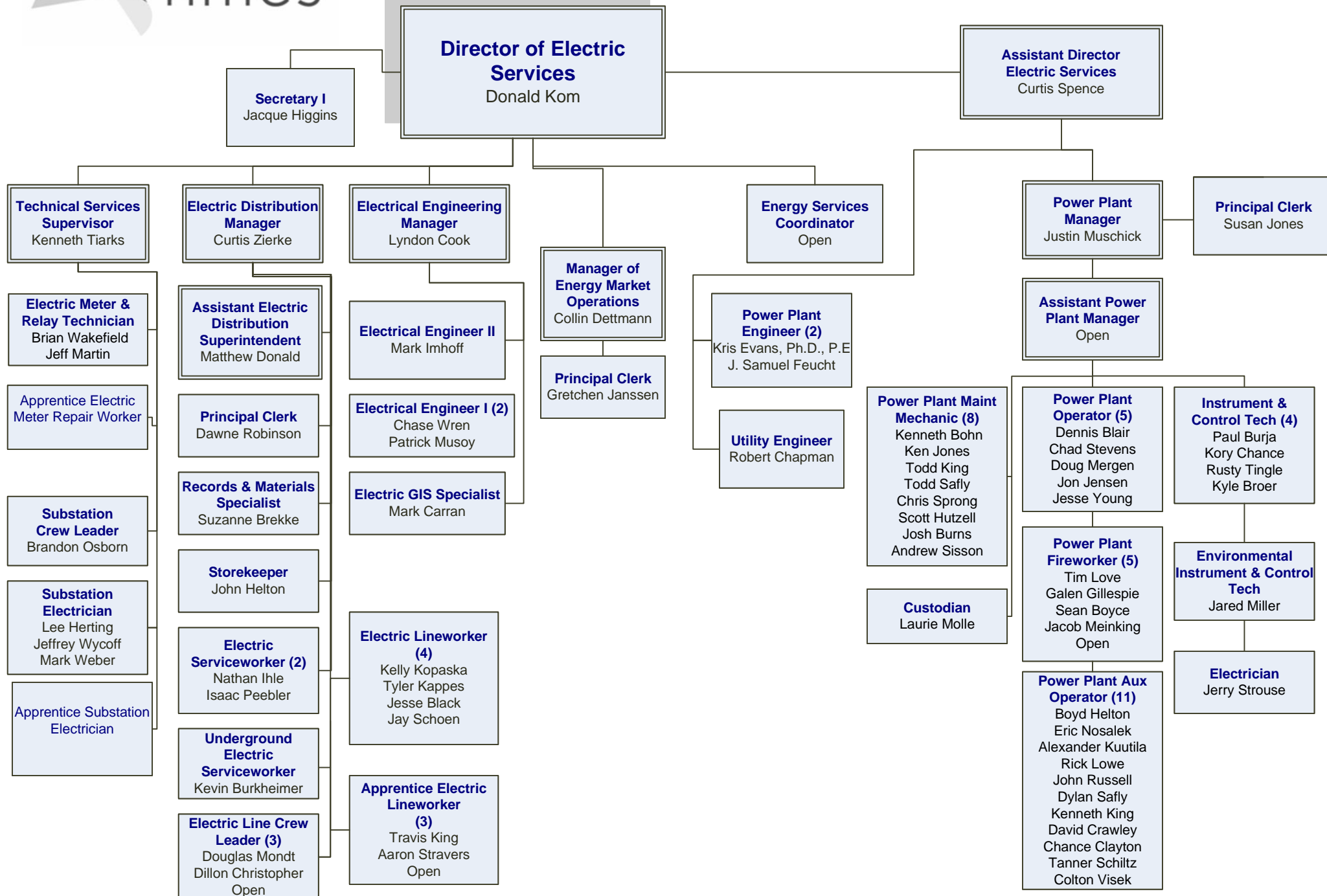
Administration  
Airport  
Engineering  
Parking Meter Repair  
Resource Recovery  
Streets  
Traffic  
Utility Maintenance

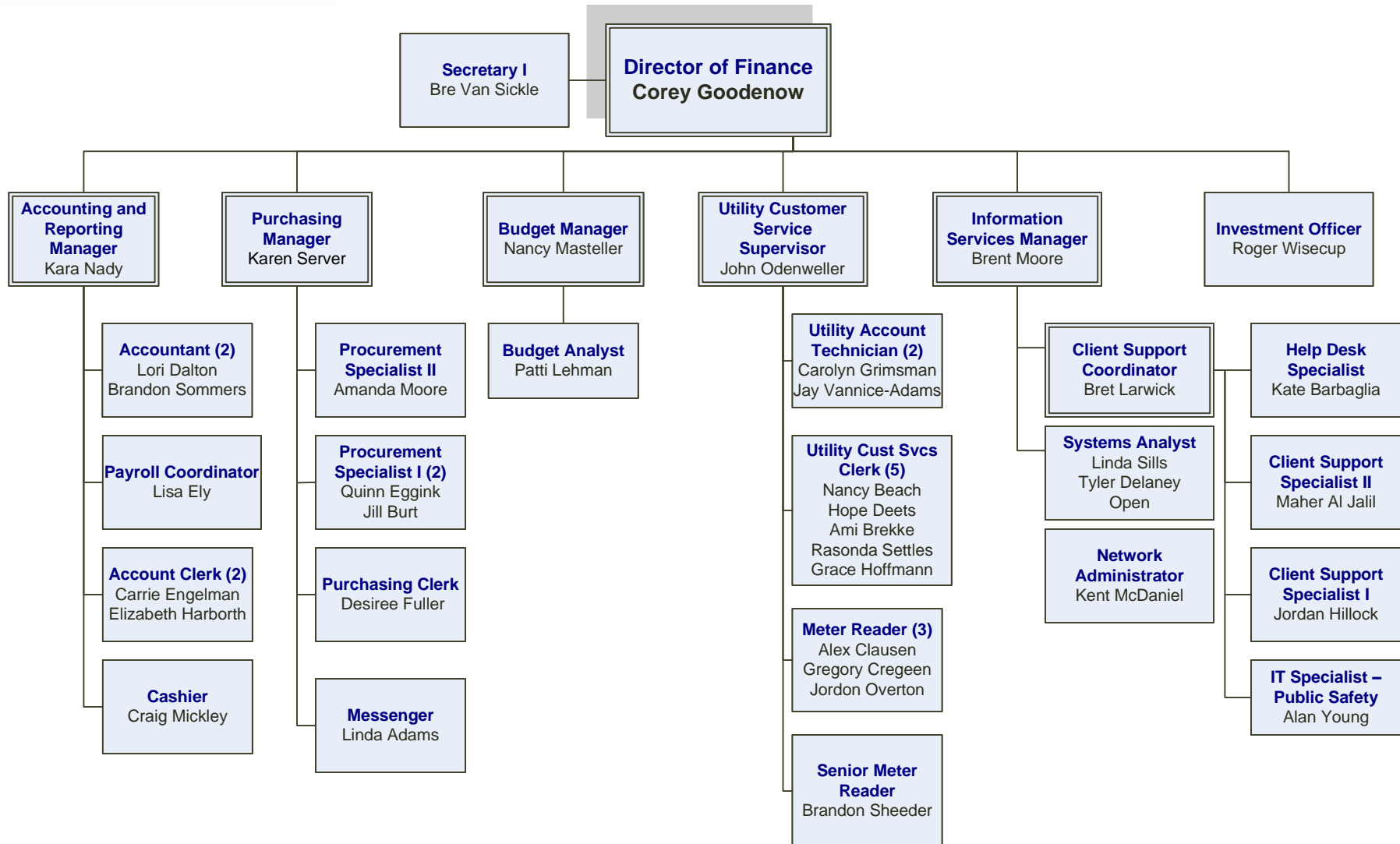


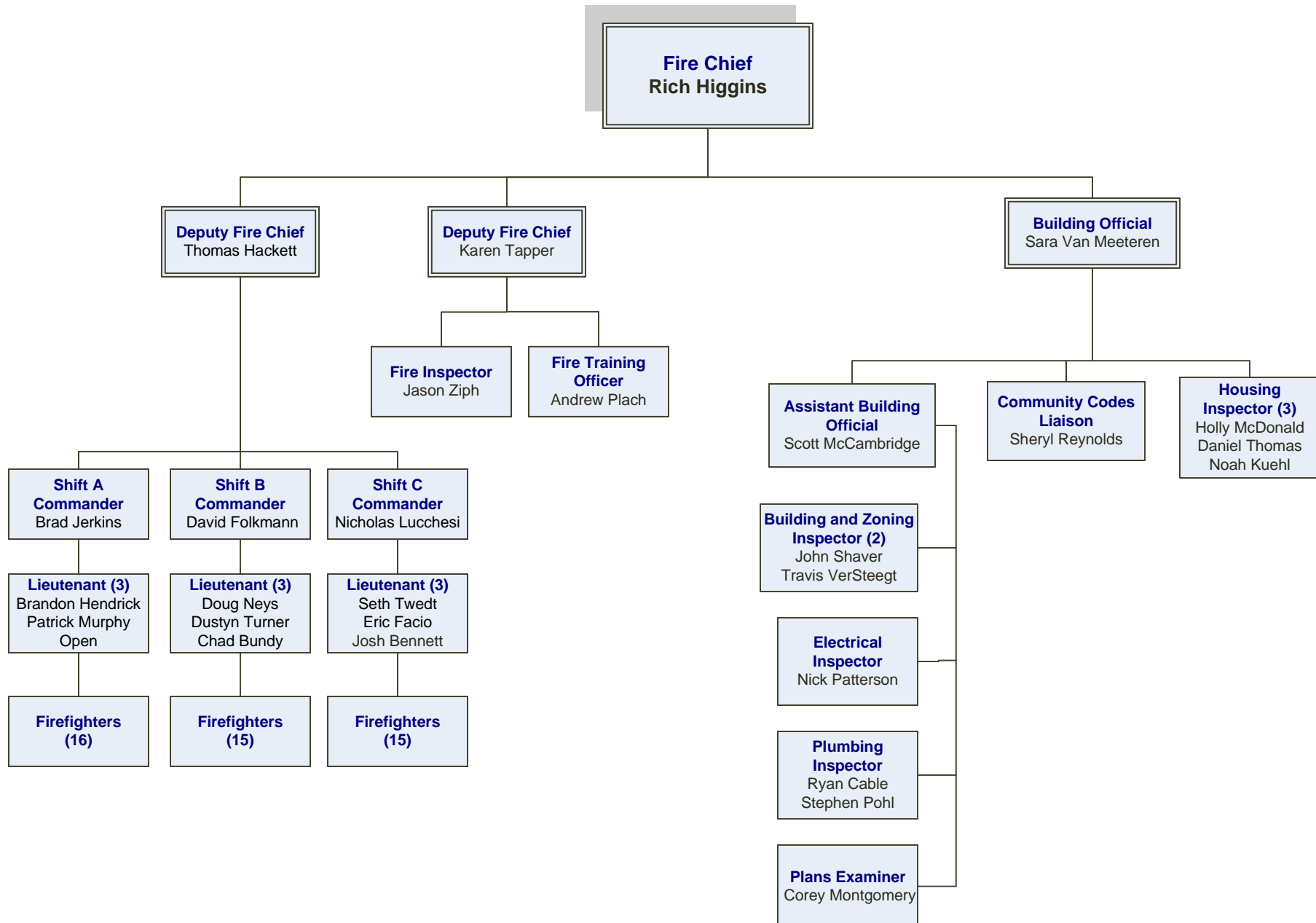


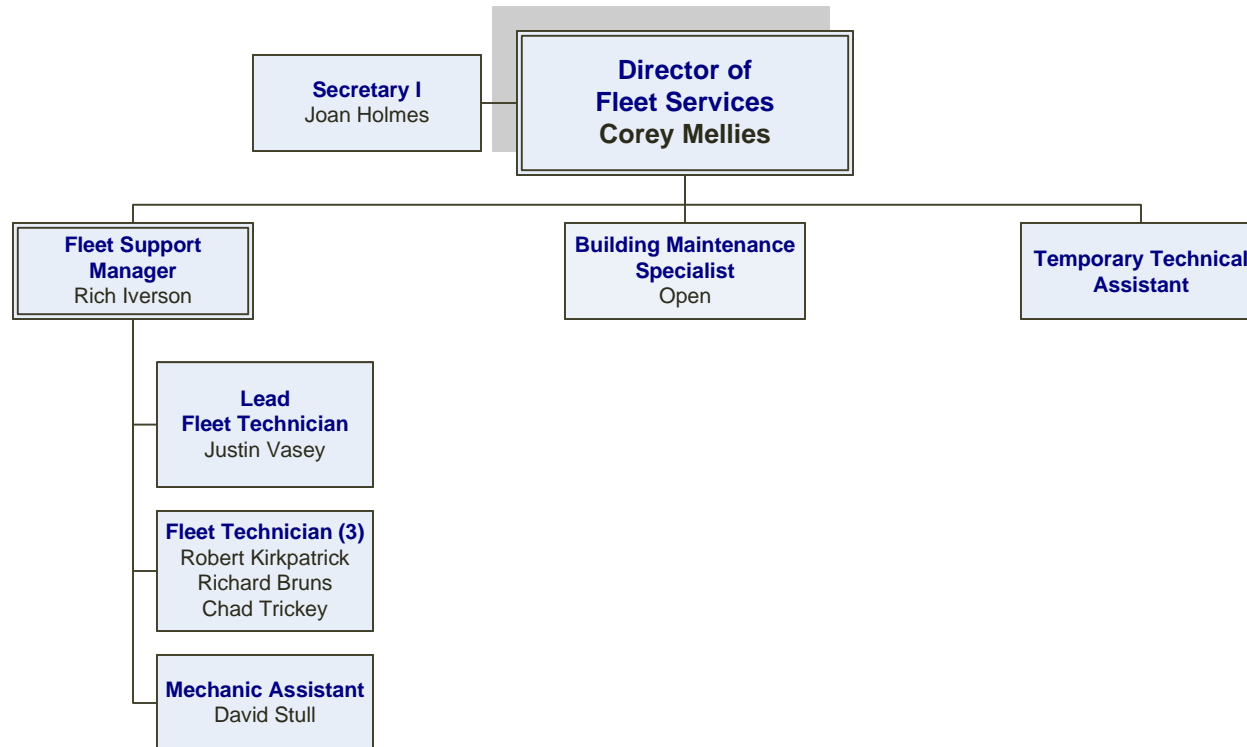
\*DBE Liaison Officer

# ELECTRIC SERVICES











# HUMAN RESOURCES

**Director of  
Human Resources**  
Bethany Jorgenson

**Risk Manager**  
Bill Walton

**Health Promotion  
Coordinator**  
Kacie Schumann

**Human Resources  
Officer II**  
Krista Hammer

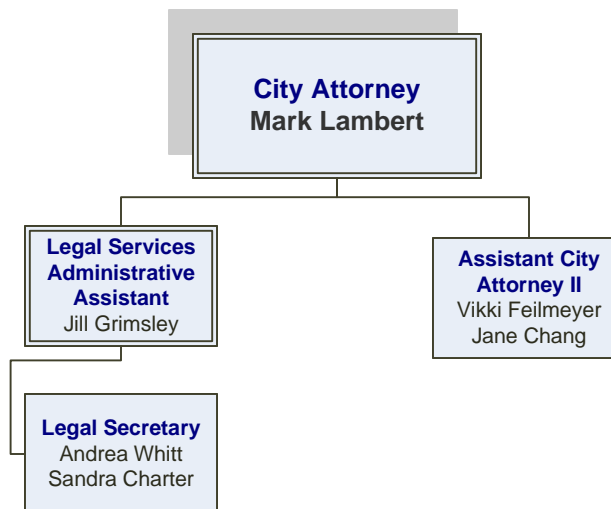
**Human Resources  
Officer I**  
Lindsay Moeller  
Emily Newton

**Human Resources  
Specialist**  
Samantha Perry

**Human Resources  
Secretary I**  
Vicki Hillock

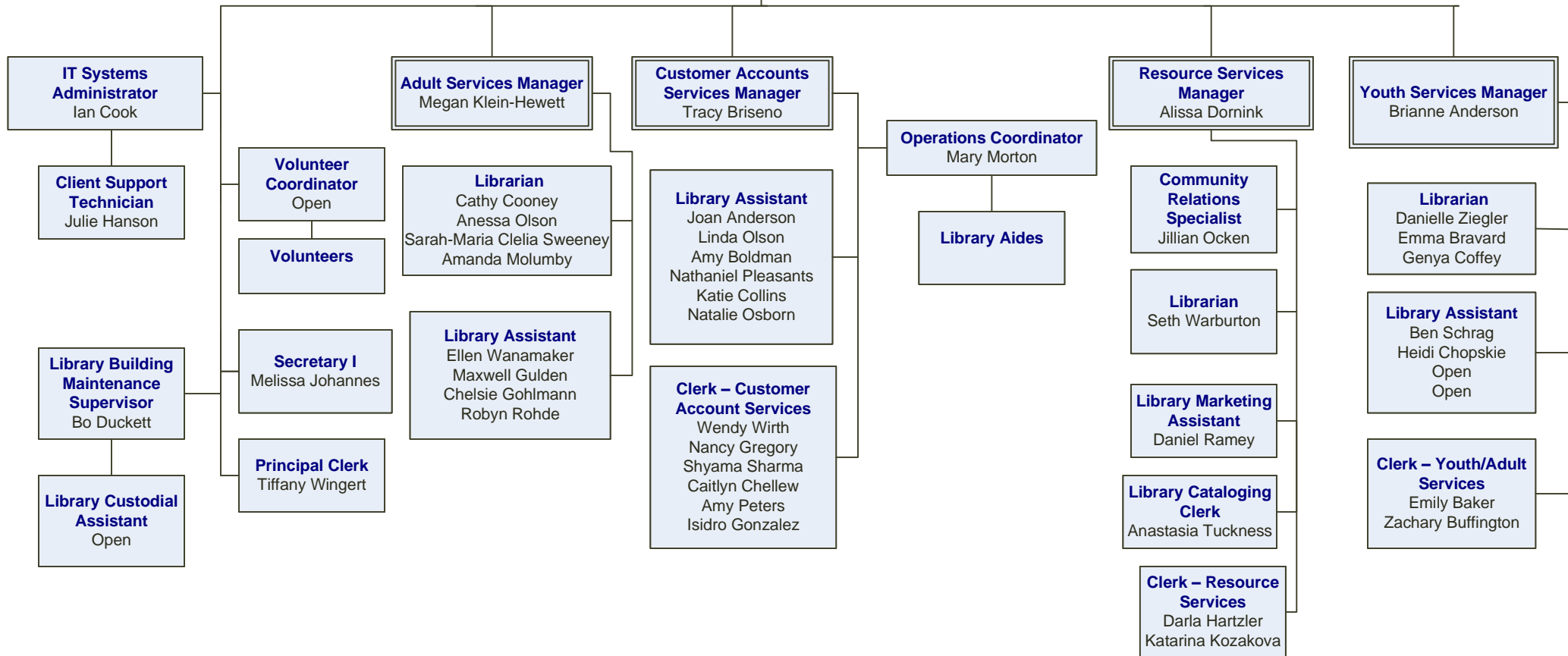
**Human Resources  
Assistant**  
Lyle Davenport

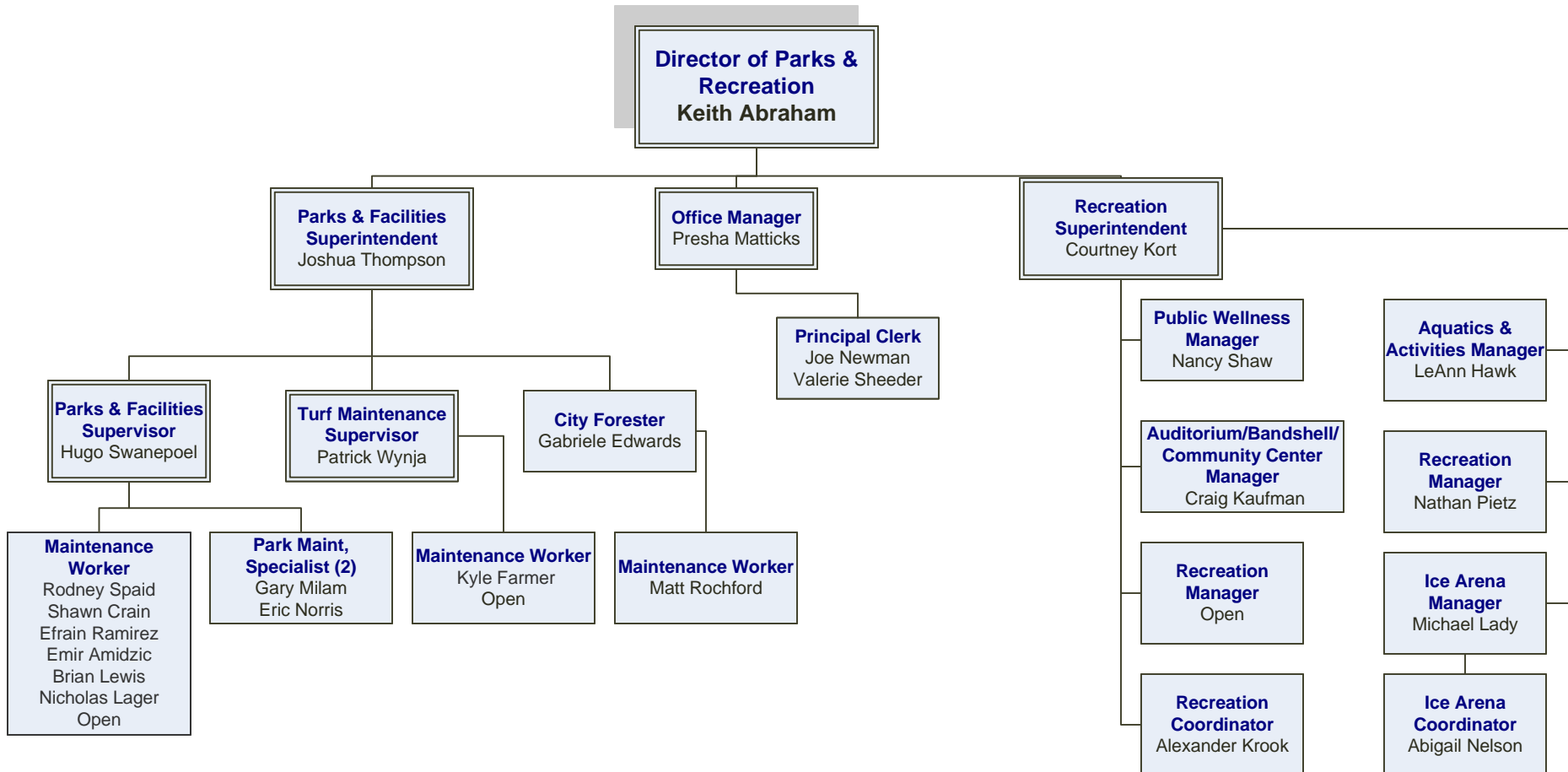




## BOARD OF TRUSTEES

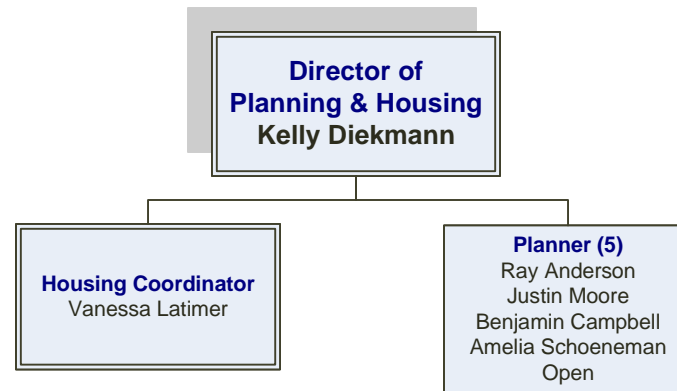
**Library Director**  
Sheila Schofer

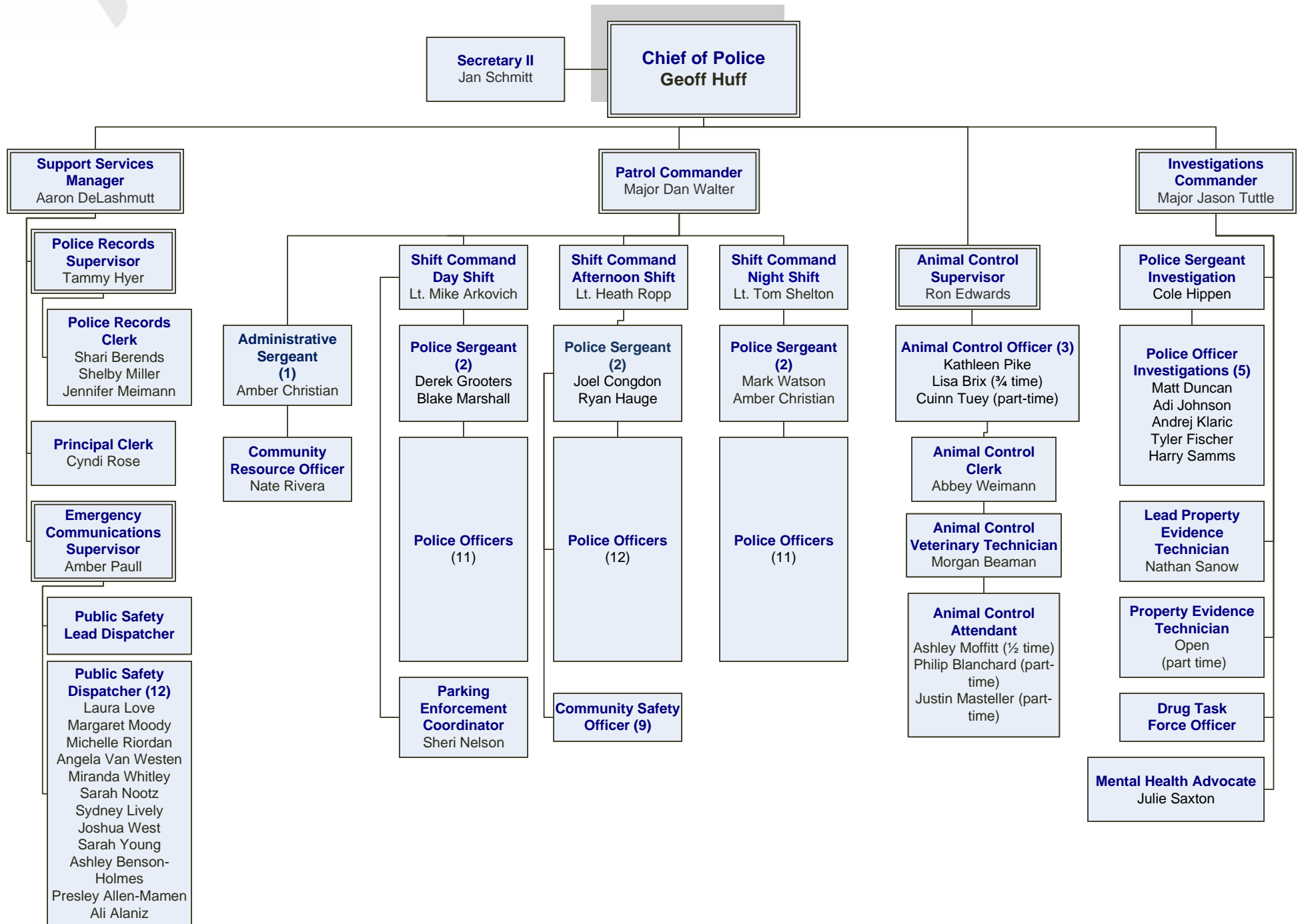


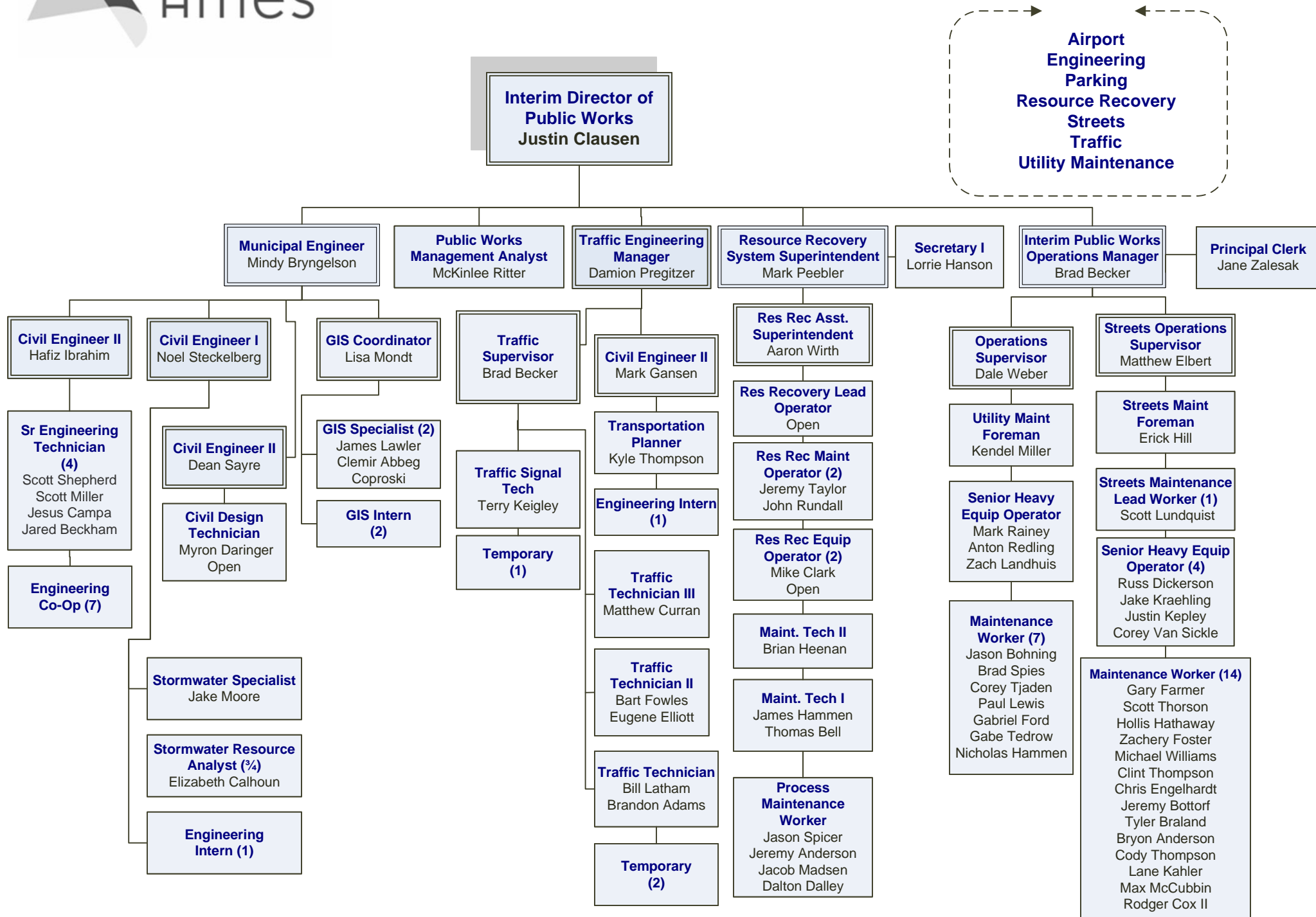




# PLANNING & HOUSING









# SHARED SUPPORT STAFF



**Administrative Services  
Coordinator**  
Ashley Gibson

**Principal Clerk (4)**

Eileen Carter  
Natalie Rekemeyer  
Laura Colebrooke  
Brittany Clayton

# WATER & POLLUTION CONTROL

