

Figures

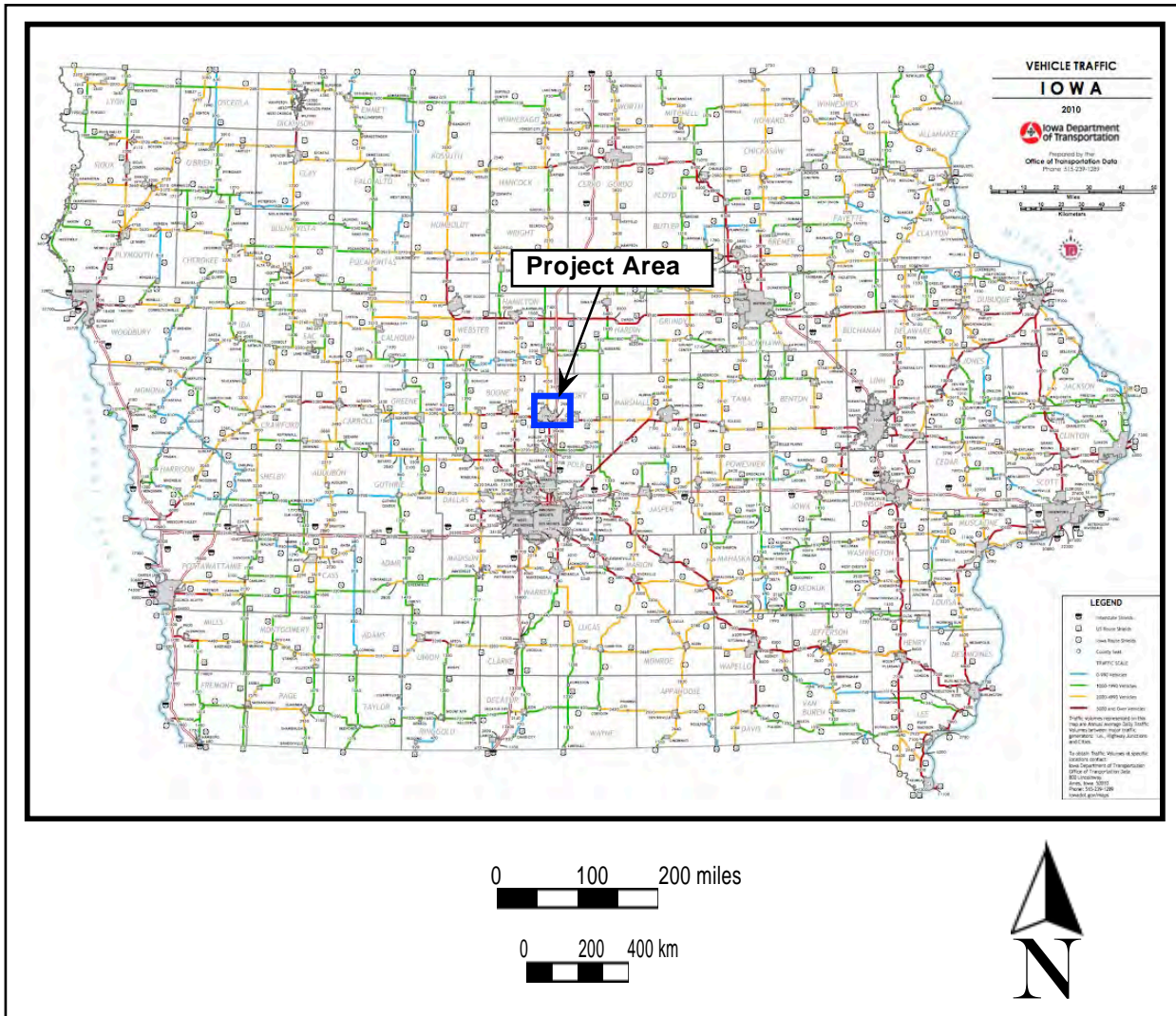


Figure 1. State of Iowa map showing the location of the project area. *Source: Iowa Department of Transportation (2010).*



Figure 2. Topographic map of the project area. *Source: USGS 500k series, Topo! (2009).*

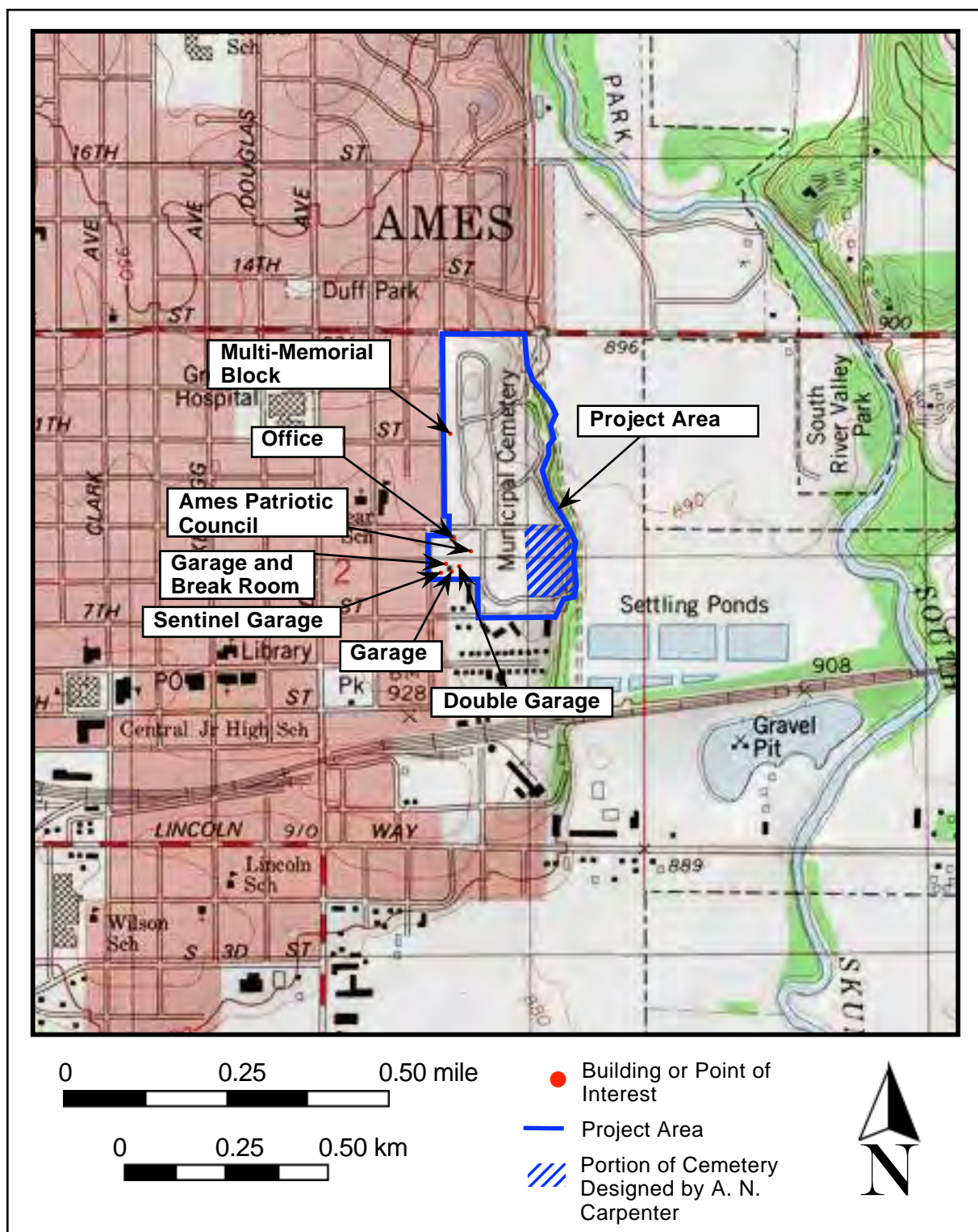


Figure 3. Topographic map of the project area. *Source: USGS, Ames East, Iowa (1975). 7.5 series quadrangle maps.*

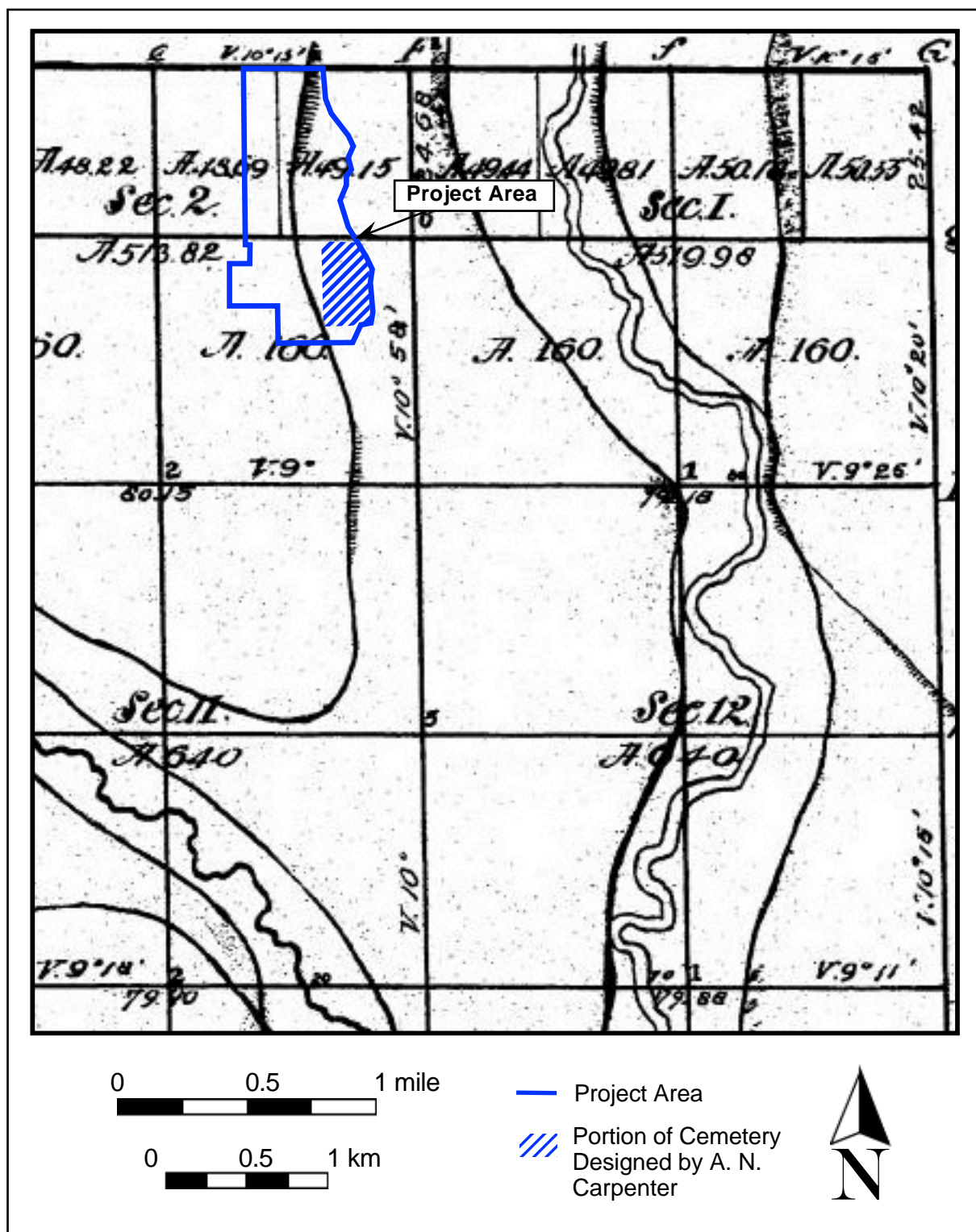


Figure 4. 1846, 1847 Iowa Land Survey Map of the project area. Source: *Iowa Land Survey Map of T083N, R024W (1846, 1847)*.

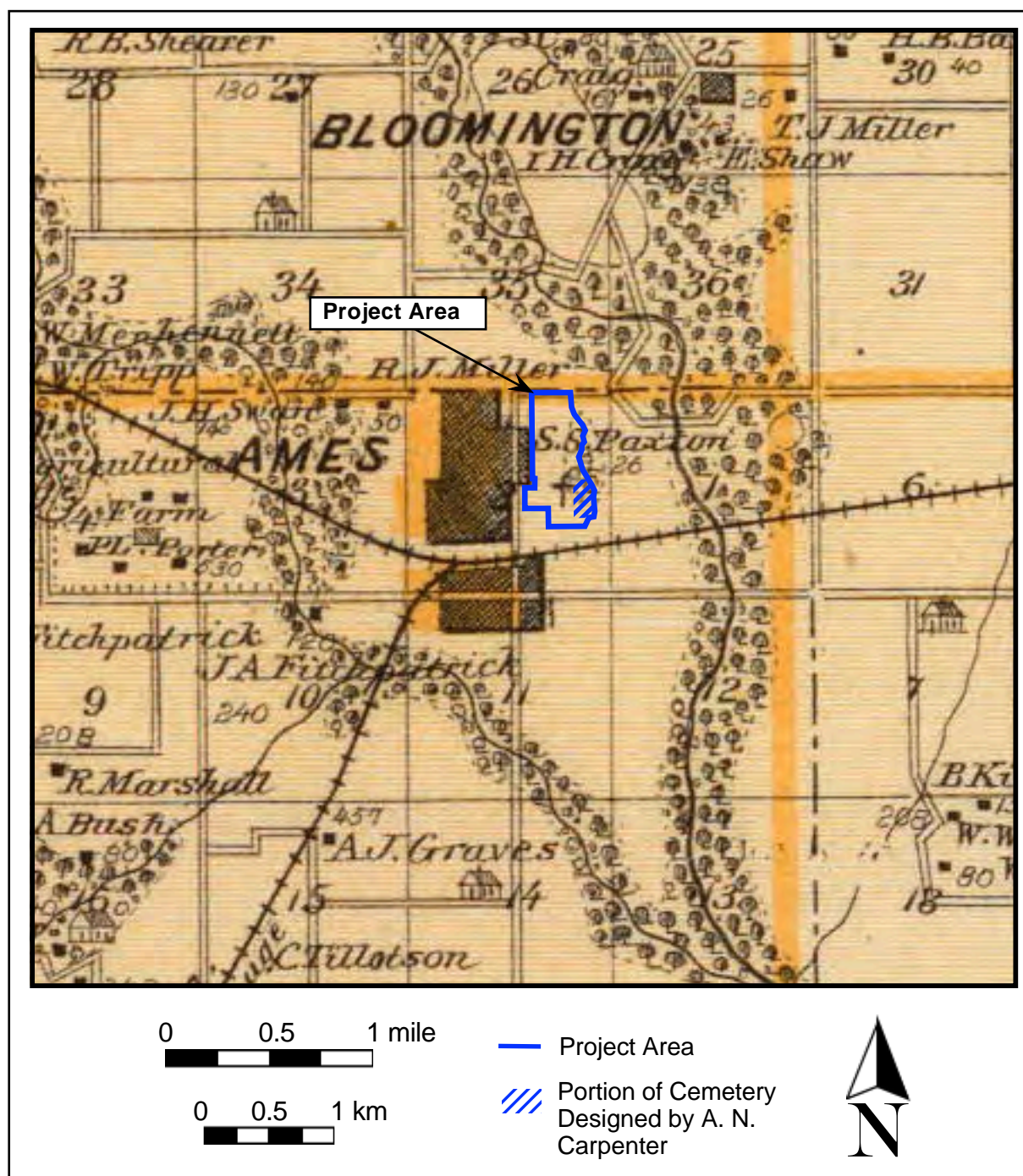


Figure 5. 1875 Illustrated Atlas of the State of Iowa showing the project area.
Source: A.T. Andreas (1875).

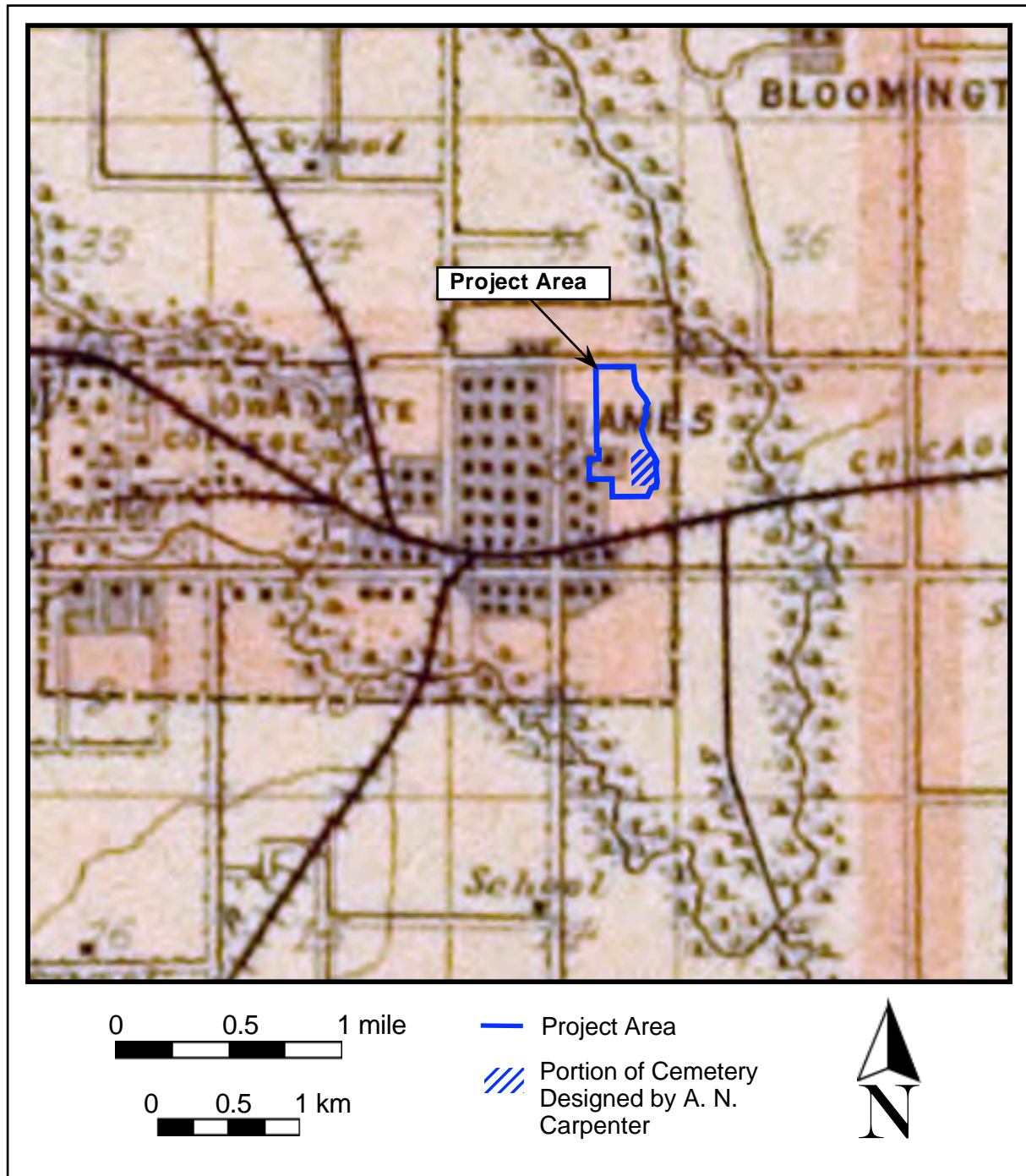


Figure 6. 1902 historic map of Story County, Iowa showing the project area. Source: *Atlas of Story County, Iowa (1902)*.

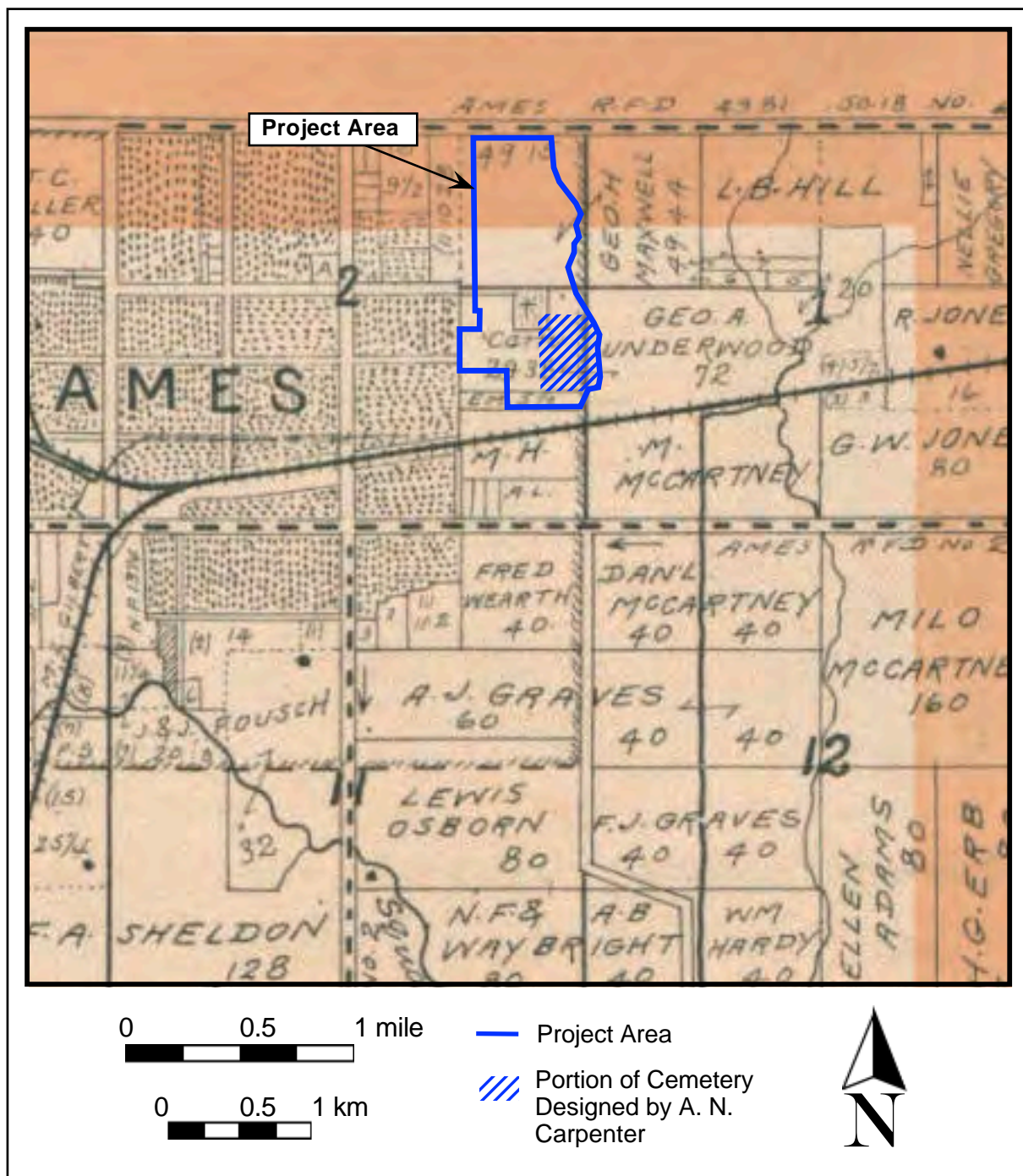


Figure 7. 1908 historic map of Story County, Iowa showing the project area. Source: *Souvenir Atlas of Story County, Iowa (1908)*.

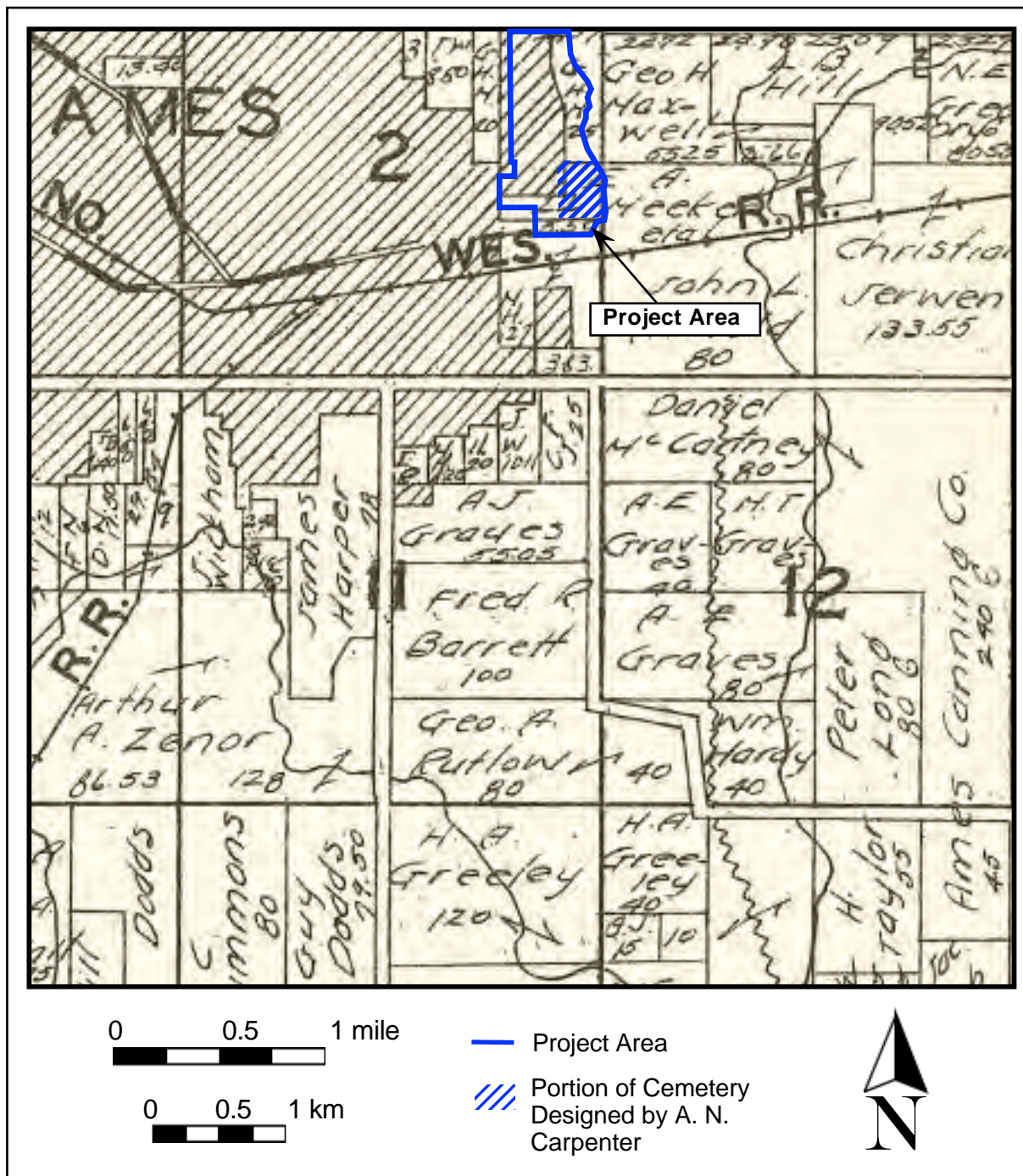
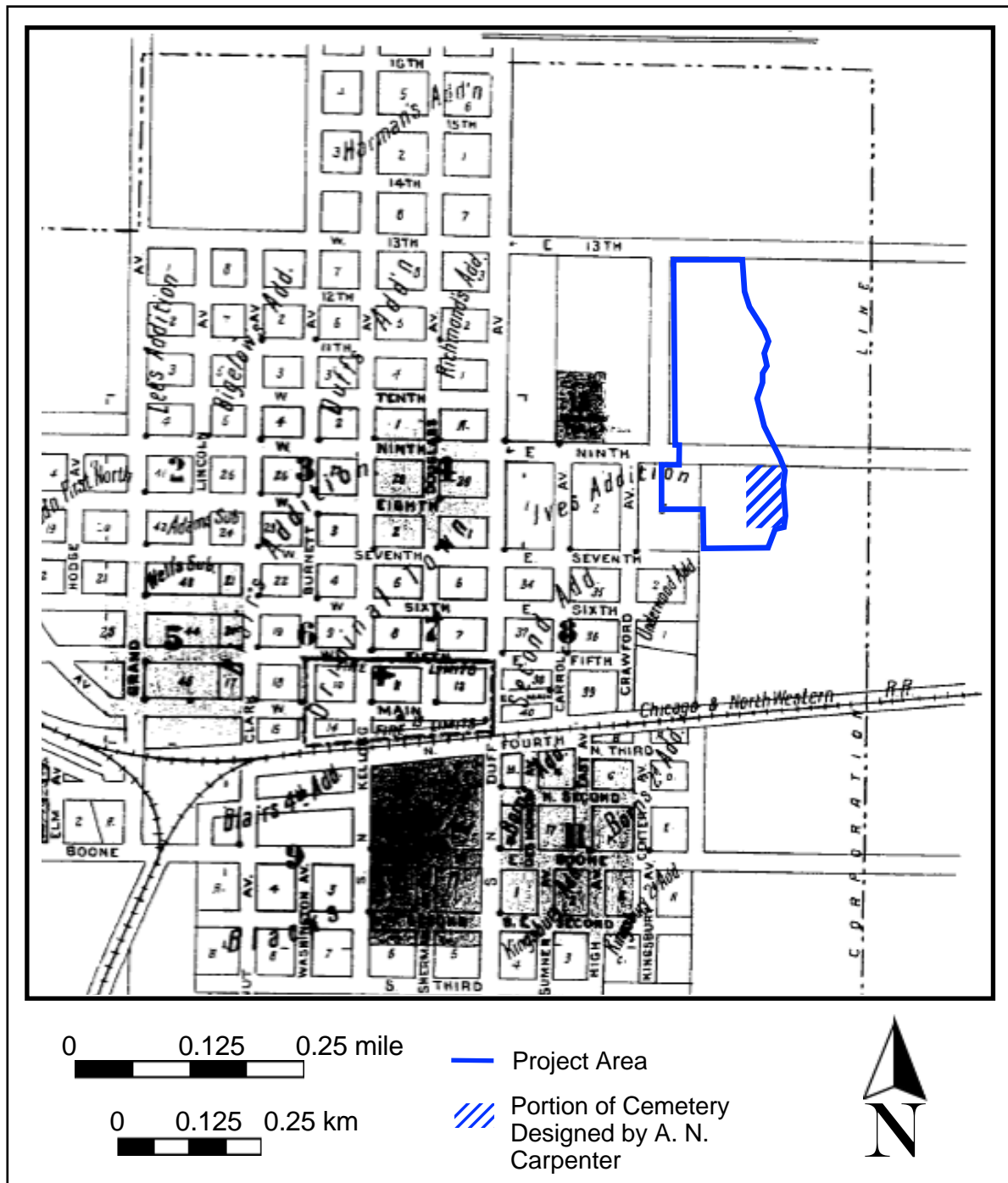


Figure 8. 1930 historic map of Story County, Iowa showing the project area. Source: *Plat Book of Story County, Iowa (1930)*.



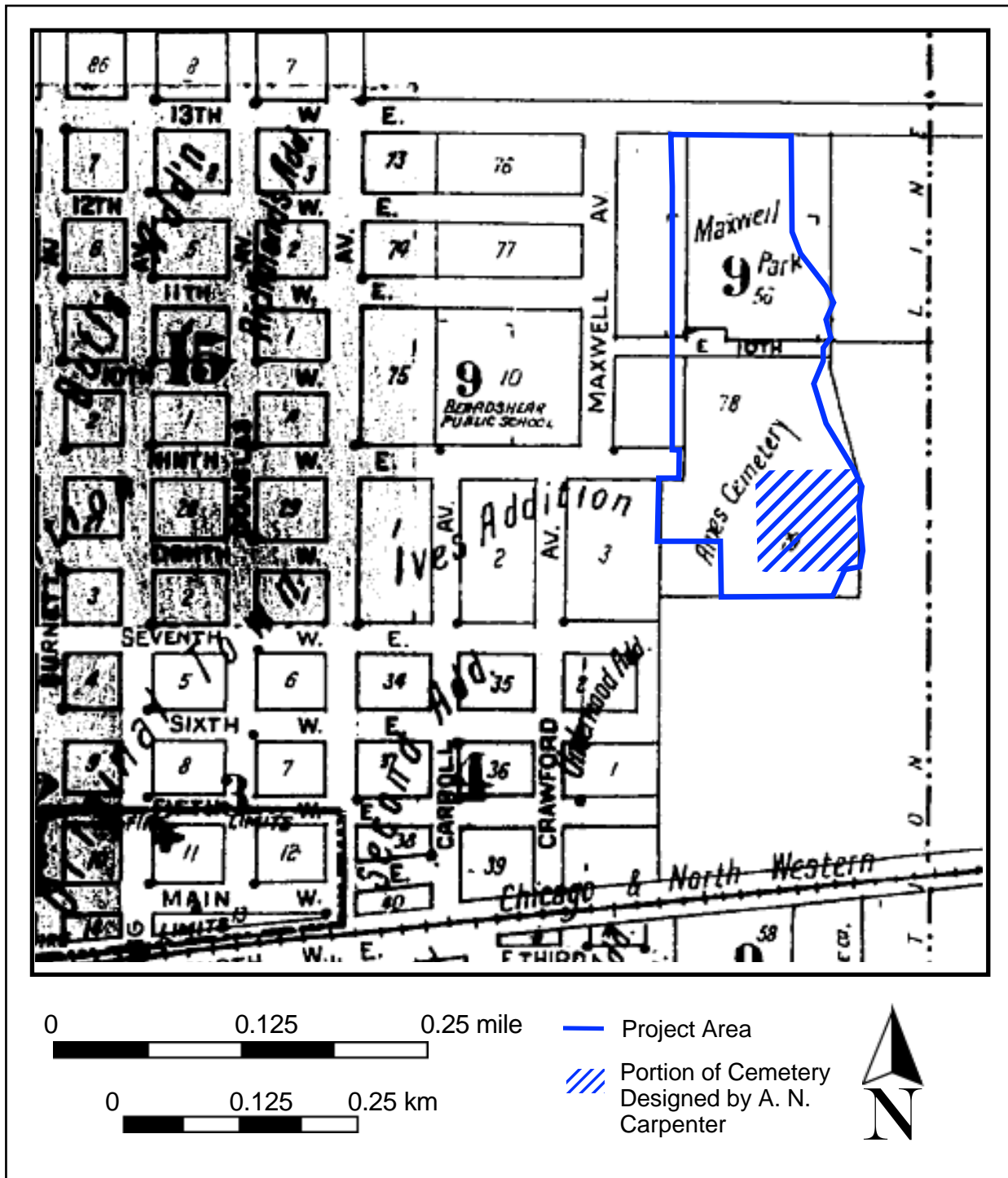


Figure 10. 1920 Sanborn Fire Insurance Map showing the project area. Source: ProQuest Digital Sanborn Maps (1867-1970).

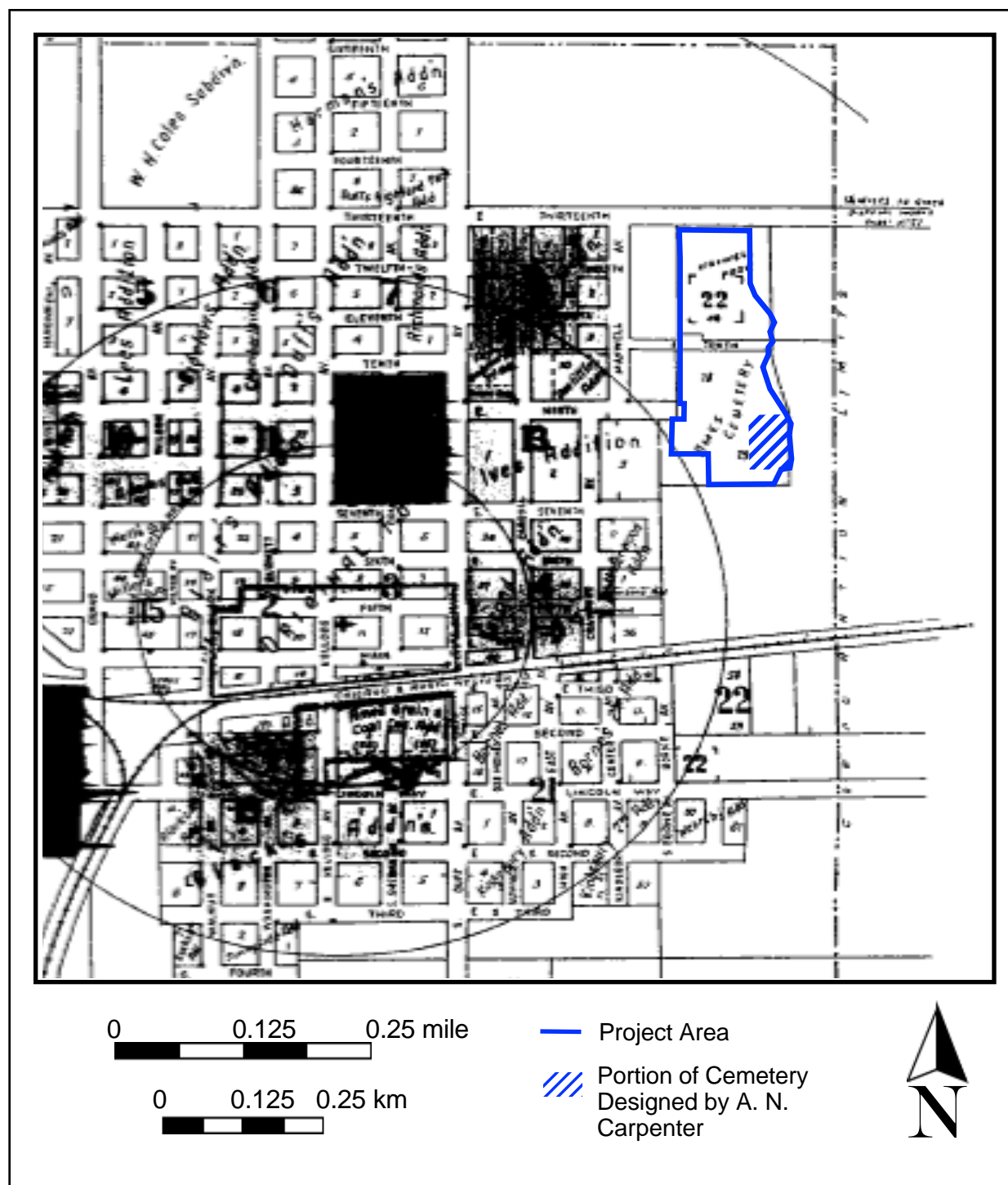


Figure 11. 1926 Sanborn Fire Insurance Map showing the project area. *Source: ProQuest Digital Sanborn Maps (1867-1970).*

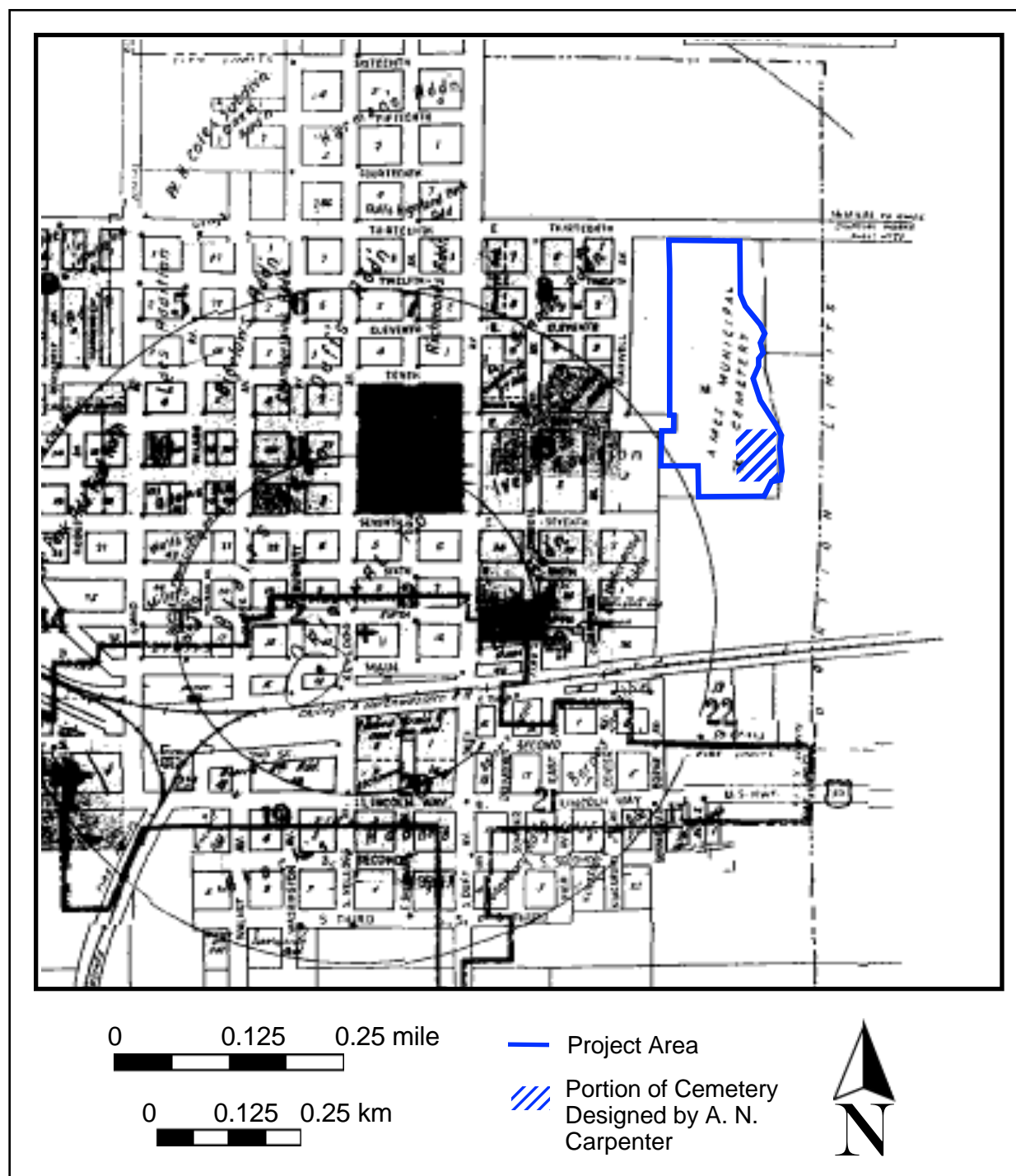


Figure 12. 1926 Sanborn Fire Insurance Map (with 1947 additions) showing the project area. Source: *ProQuest Digital Sanborn Maps (1867-1970)*.

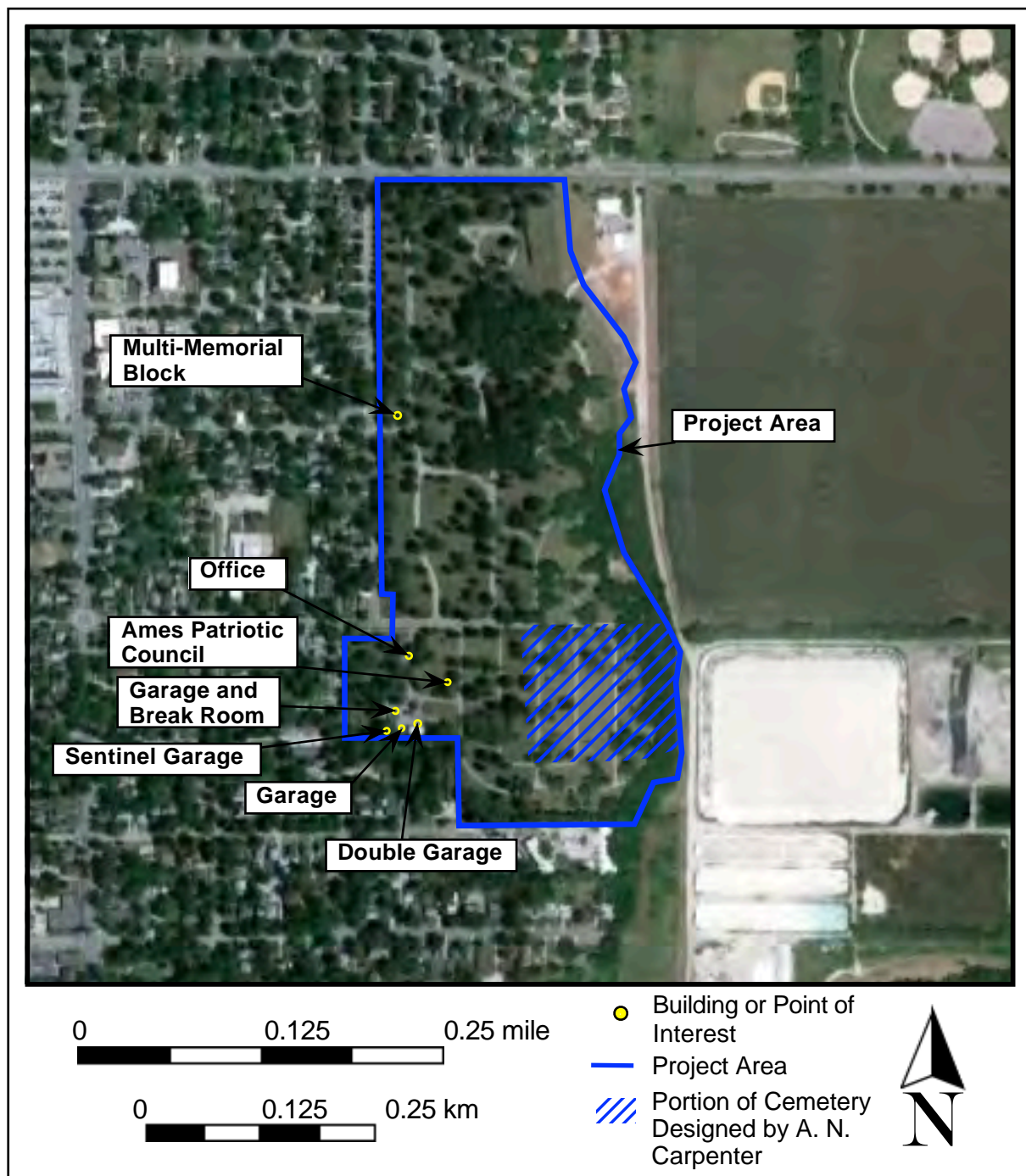


Figure 13. Aerial photograph of the project area. *Source: Google Earth (2010).*

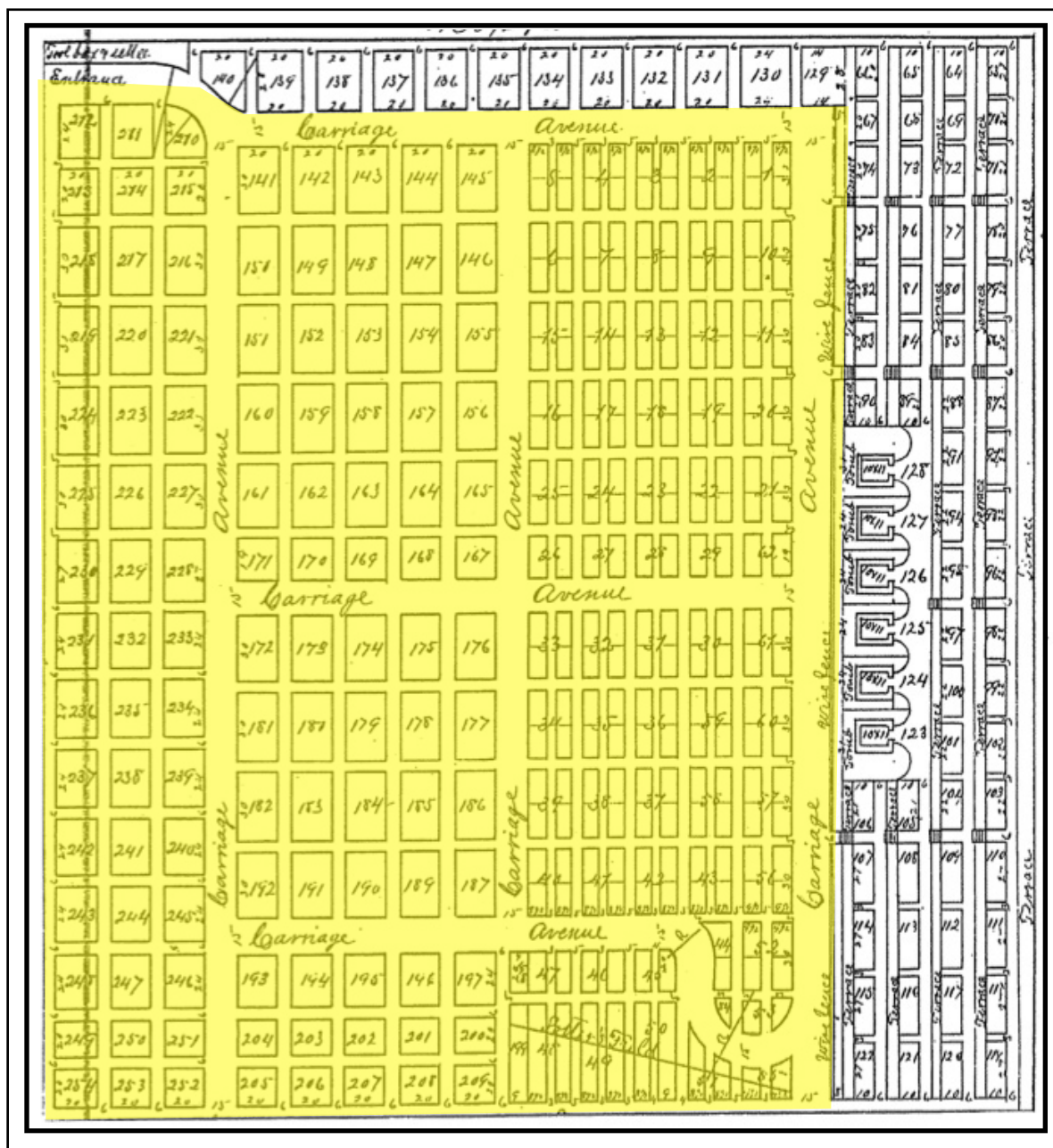


Figure 14. A. N. Carpenter's original design for the Ames Municipal Cemetery. The portion highlighted in yellow denotes the section of the plan that was implemented in the cemetery design. This portion of the cemetery remains relatively unchanged today. Source: Iowa Site Inventory form #85-00564 (1991).

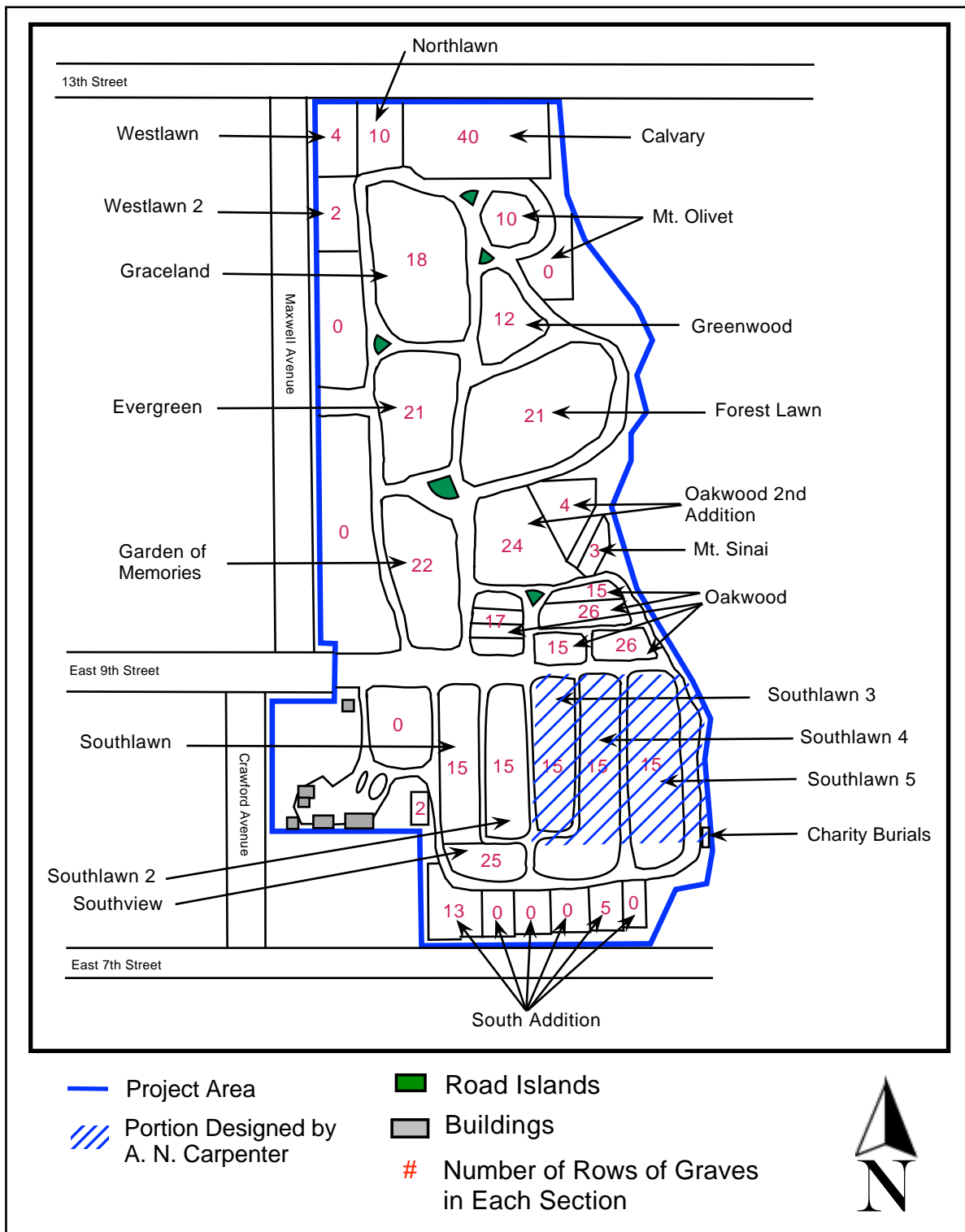


Figure 15. Current layout of the project area.



Figure 16. Southlawn 3 section, view to the southeast.



Figure 17. Southlawn 4 section, view to the southeast.



Figure 18. Southlawn 5 section, view to the southeast.



Figure 19. Southlawn 5 section showing oldest burials in the cemetery, view to the north.

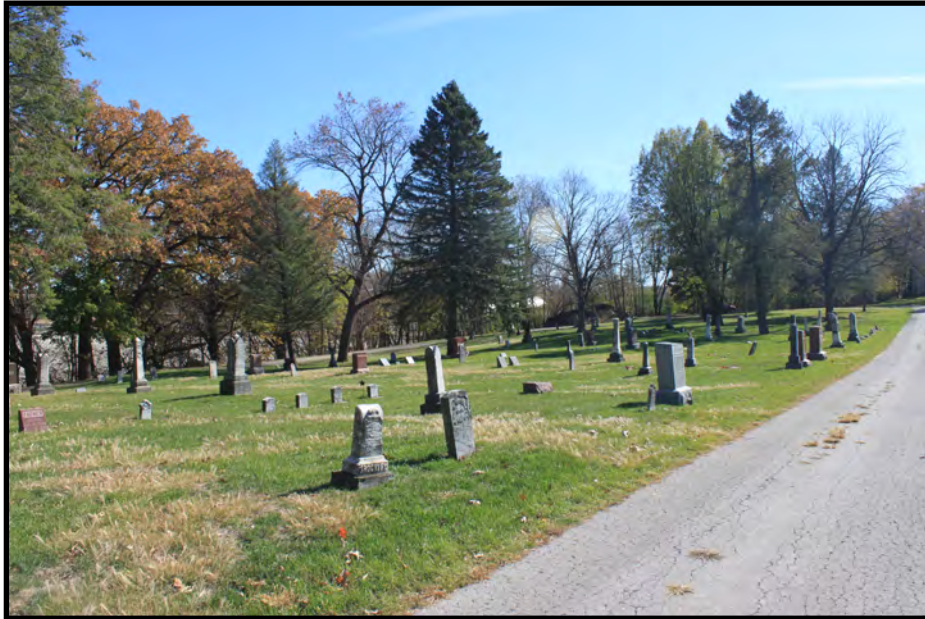


Figure 20. Southlawn 5 section showing oldest burials in the cemetery, view to the south.



Figure 21. Example of Victorian Grave Marker, view to the west.



Figure 22. Example of Victorian Grave Marker, view to the east.



Figure 23. Example of Victorian Grave Marker, view to the northeast.



Figure 24. Example of Victorian Grave Marker, view to the east.

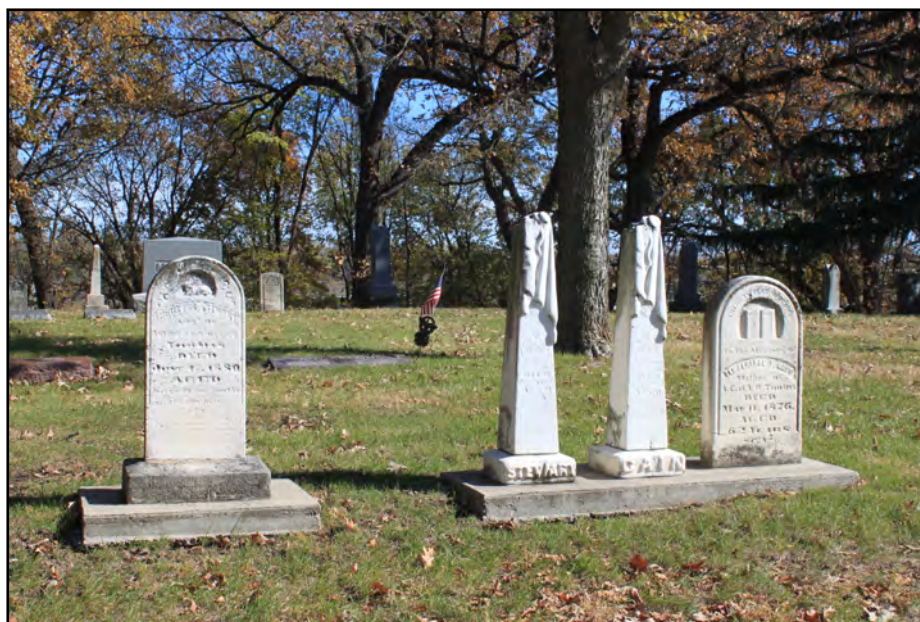


Figure 25. Example of Victorian Grave Markers, view to the east.

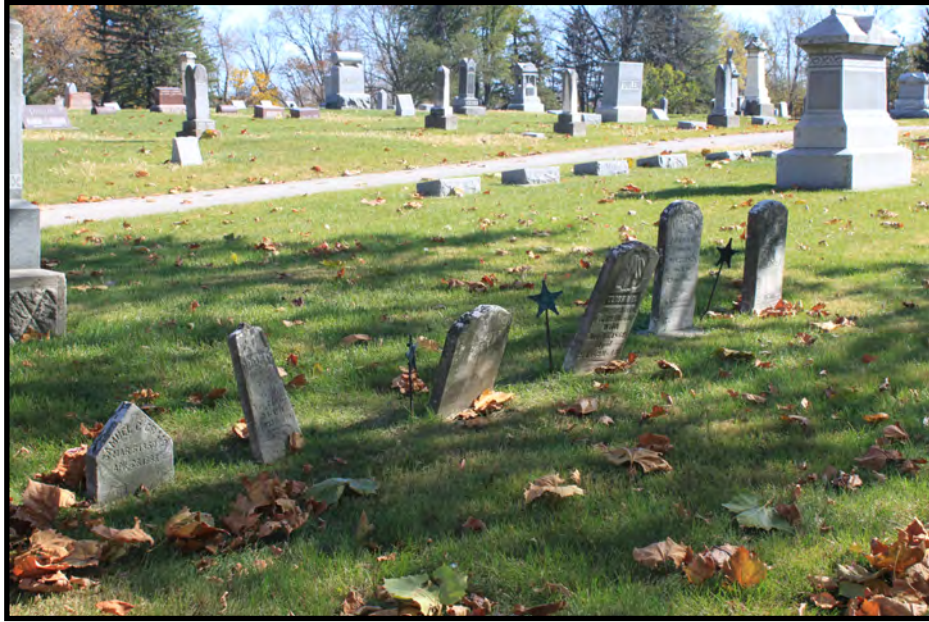


Figure 26. Example of Victorian Grave Markers, view to the southeast.



Figure 27. Southlawn 4 Section, Greeley Mausoleum, view to the northwest.



Figure 28. Drop pile near charity burials, view to the northeast.

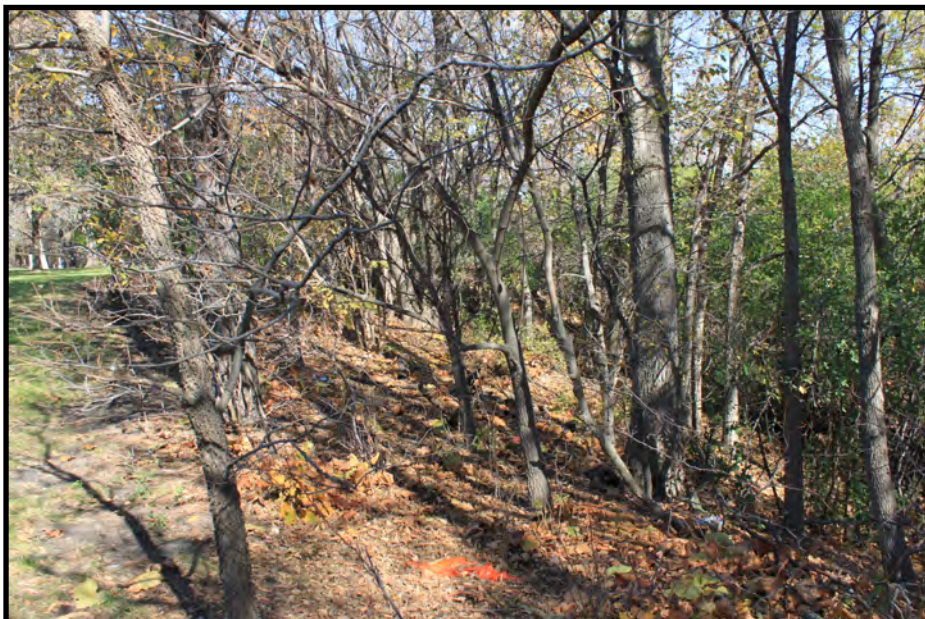


Figure 29. Woods behind charity burials, view to the north.



Figure 30. Oakwood section, view to the east.

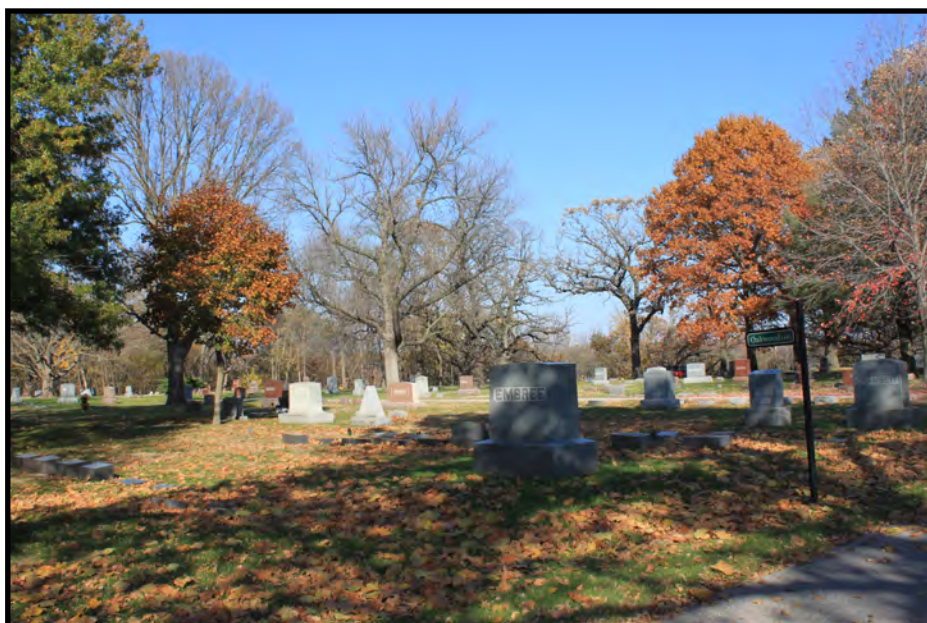


Figure 31. Oakwood section, view to the east.

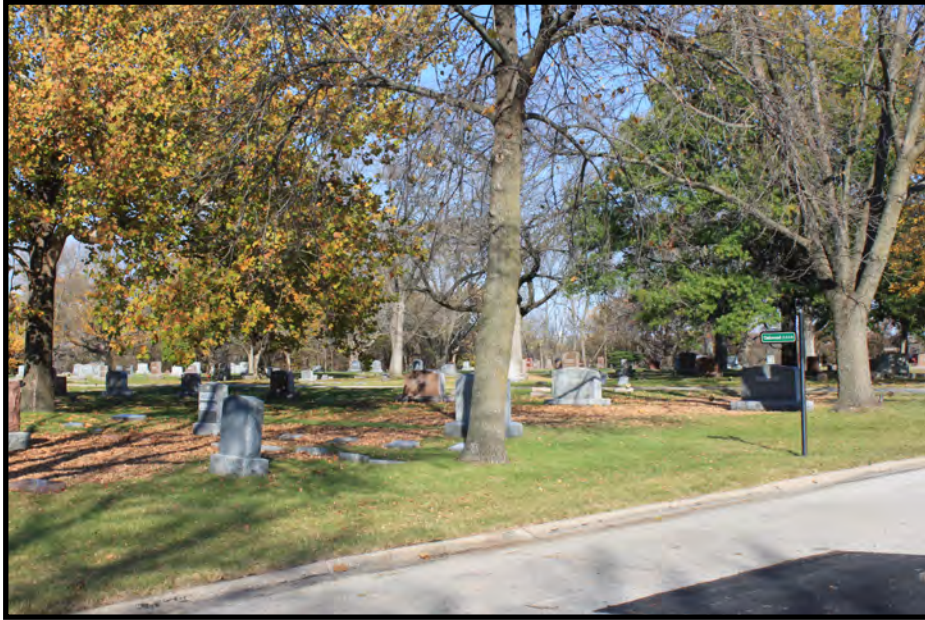


Figure 32. Oakwood section, view to the east.



Figure 33. Oakwood section, view to the east.



Figure 34. Oakwood section, view to the east.



Figure 35. Garden of Memories section, view to the north.



Figure 36. Mt. Sinai section, view to the east.



Figure 37. Forest Lawn section, view to the east.



Figure 38. Greenwood section, view to the east.



Figure 39. Mt. Olivet section, view to the east.



Figure 40. Calvary section, view to the north.



Figure 41. Northlawn section, view to the northwest.



Figure 42. Westlawn section, view to the northwest.



Figure 43. Graceland section, view to the east.



Figure 44. Evergreen section, view to the east.



Figure 45. Access roads, view to the northeast.



Figure 46. 13th Street wall, view to the west.



Figure 47. Garages and Break Room, view to the west.



Figure 48. Office, view to the west.



Figure 49. Flag Pole, view to the west.



Figure 50. Sundial, view to the north.



Figure 51. Ames Patriotic Council platform, view to the southeast.



Figure 52. Veteran's Memorial, view to the southeast.



Figure 53. Garden of Memories monument, view to the east.



Figure 54. Multiple Burials Cremation Remains Monument, view to the south.

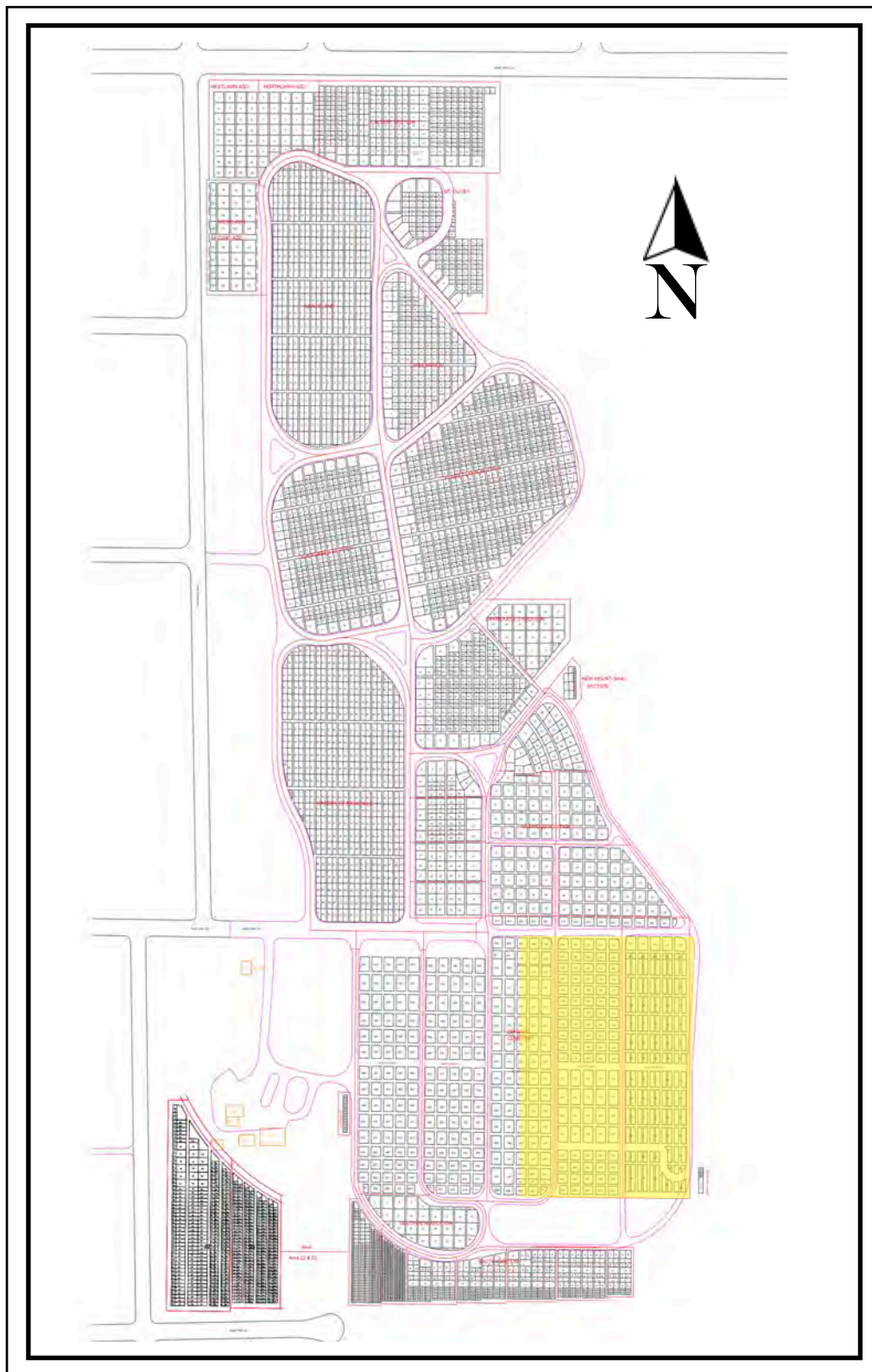


Figure 55. Current site plan of Ames Municipal Cemetery with portion eligible for the National Register of Historic Places highlighted in yellow. *Source: City of Ames, Iowa website (2012).*