

Study Area



Planned Improvements

S 16th Street Improvements (S Grand Ave to Lark Ave)

- **Improvements:** Roadway widening, new sidewalk construction and traffic signal modifications
- **Schedule:** Construction complete Fall 2023

US 30 Expansion (S Duff Ave to University Blvd)

- **Improvements:** Widen US 30 to six lanes
- **Schedule:** TBD (not currently programmed)

Airport Road Access Modifications (Sam's Club intersection to S Duff Ave)

- **Improvements:** New traffic signal, access modifications and sidewalk enhancements
- **Schedule:** Construction in 2024

Adaptive Signal Control Along S Duff Avenue (13th Street to Crystal Street)

- **Improvements:** Adaptive Signal Control Technology
- **Schedule:** Anticipated completion Fall 2023

US 30 Expansion (I-35 to S Duff Ave)

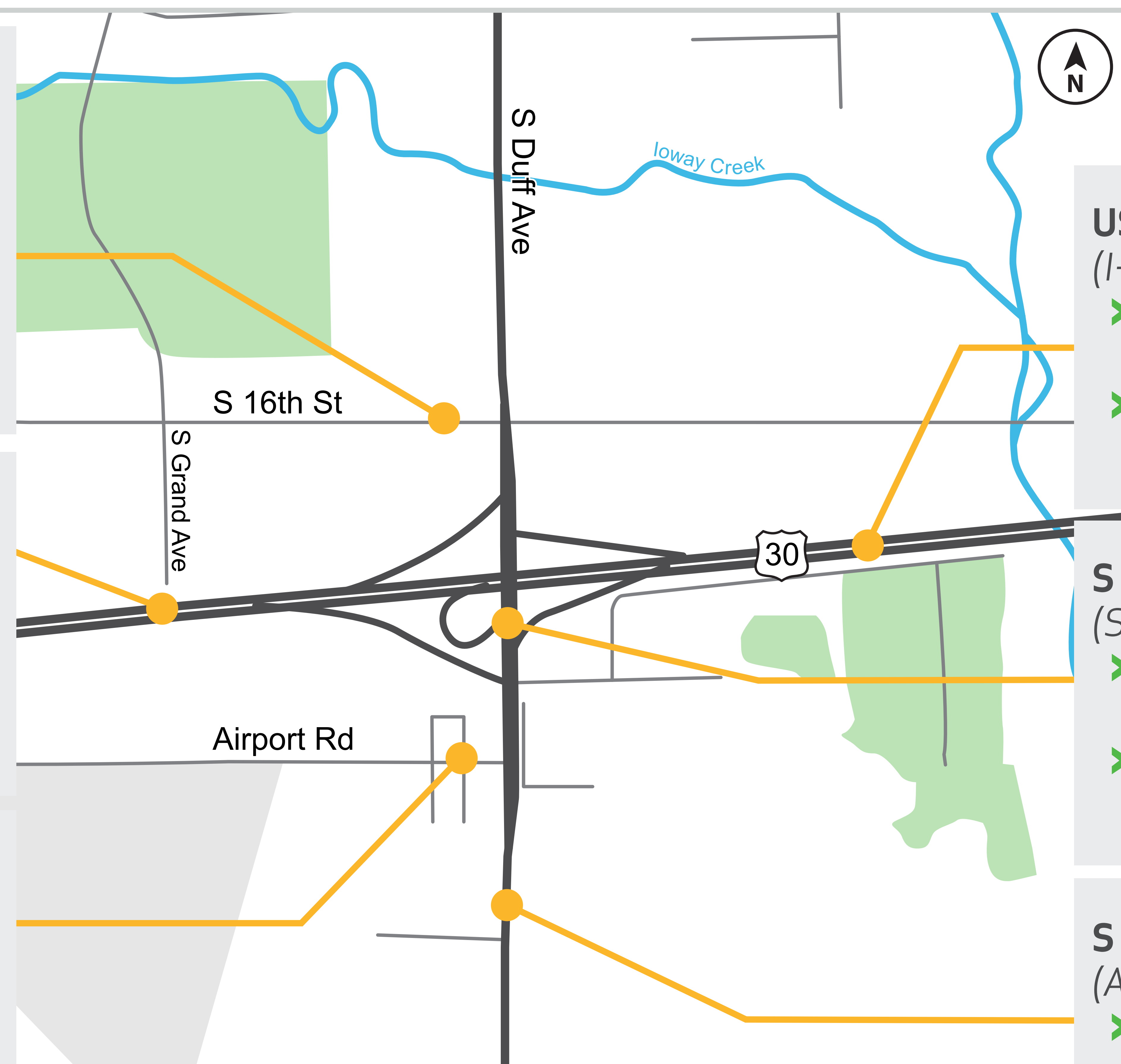
- **Improvements:** Widen US 30 to six lanes
- **Schedule:** Construction in 2025-2027

S Duff Avenue Expansion (S 16th St to Airport Rd)

- **Improvements:** Widen to six lanes
- **Schedule:** TBD (not currently programmed)

S Duff Avenue Expansion (Airport Rd to Ken Maril Rd)

- **Improvements:** Widen to five lanes with center turn lane
- **Schedule:** TBD (not currently programmed)



Project Goals



- Reduce queue length for northbound, southbound, eastbound traffic
- Improve CyRide stop access
- Accommodate high turning traffic during events
- Reduce queue length for southbound traffic
- Improve pedestrian/bicycle safety crossing freeway ramps
- Accommodate high turning traffic during events
- Accommodate high turning traffic during events
- Significant traffic volume growth expected on S Duff Avenue over next 20 years, with 30-50% growth around US 30
- Reduce queue length for eastbound traffic
- Reduce intersection crashes
- Improve pedestrian connectivity and access to CyRide stops

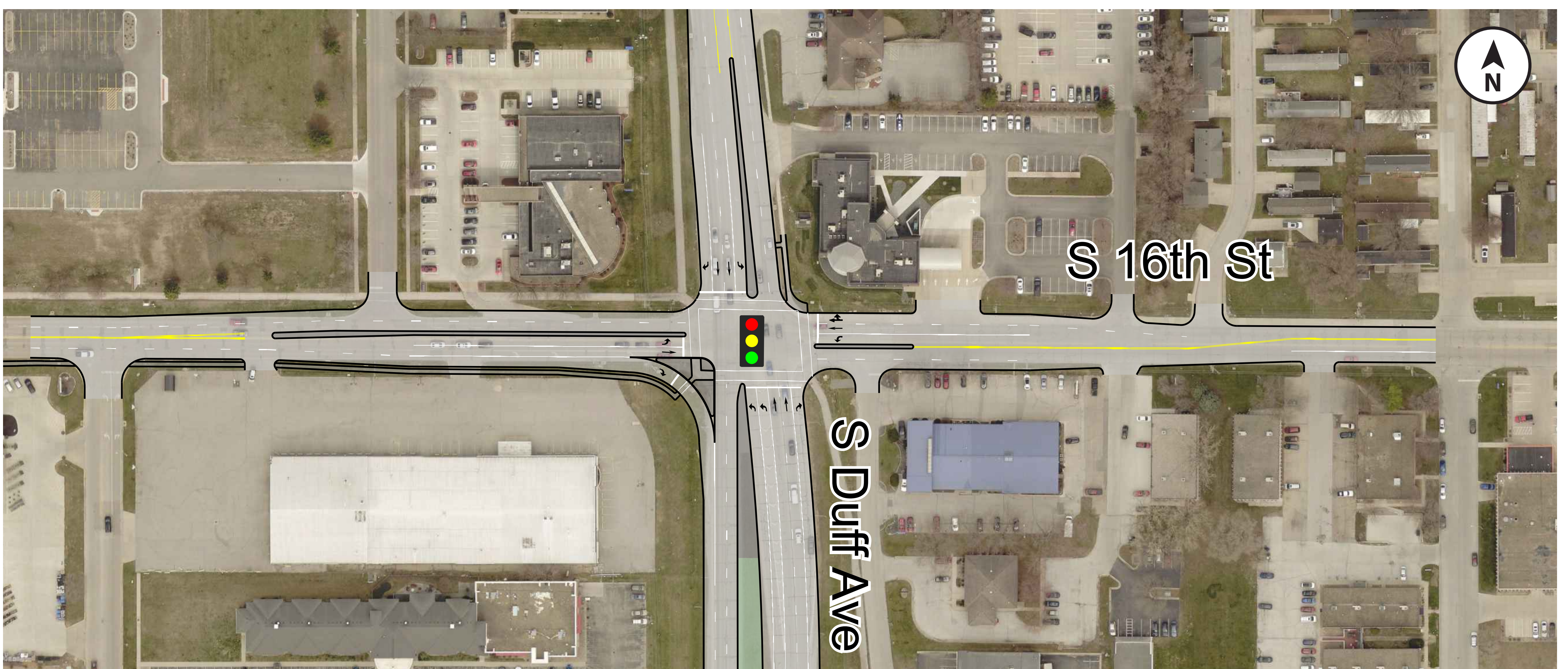
S Duff Avenue & S 16th Street Intersection

Improvements:

- East/west left-turn lanes (2023 construction)
- New sidewalk connections (2023 construction)
- Channelized eastbound right-turn lane (future construction)
- Dual northbound left-turn lanes (future construction)

Goals Achieved:

- Reduce delays and queuing
- Improve multi-modal facilities
- Better accommodate event traffic



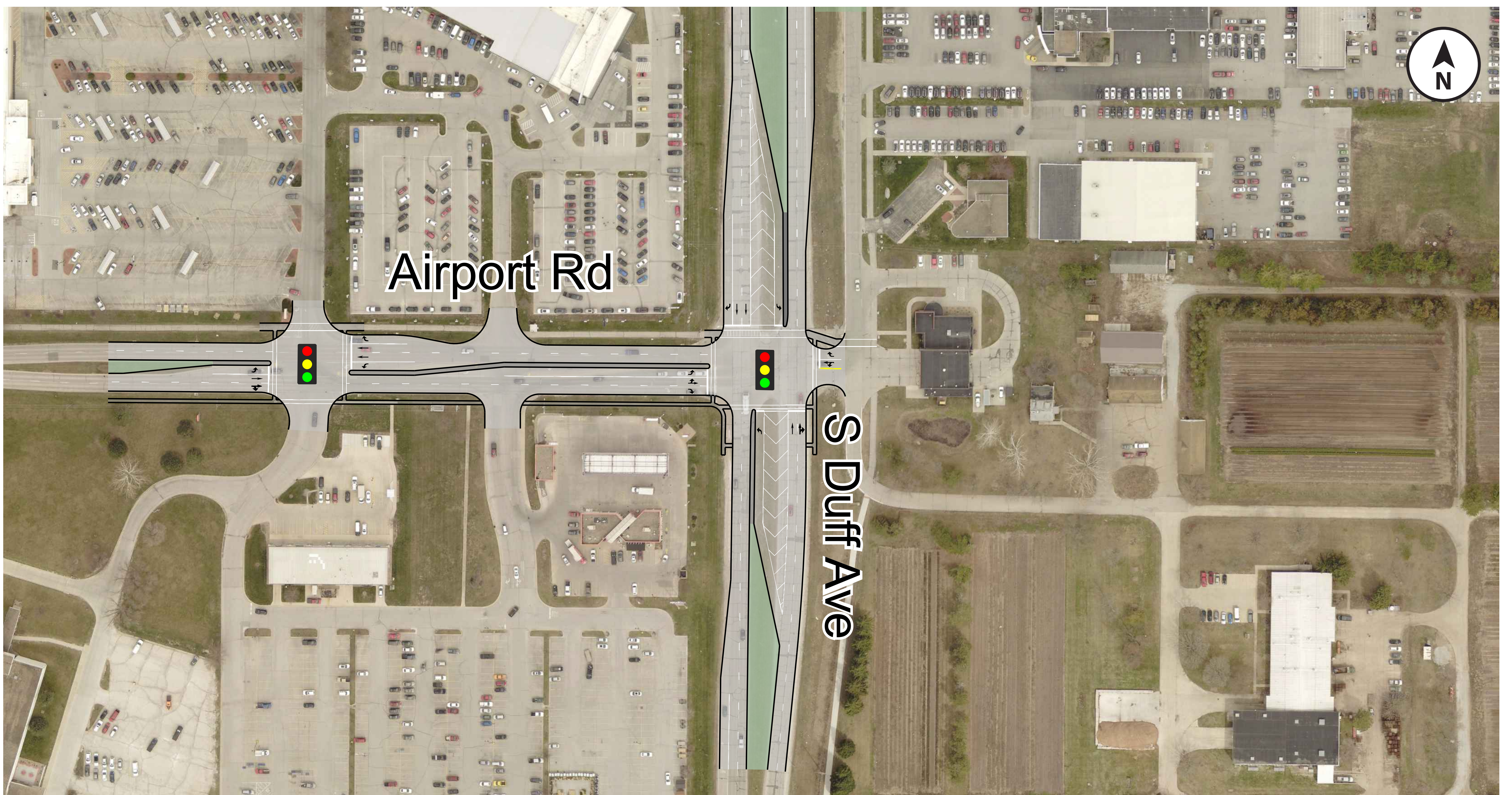
Airport Road Access Modifications

Improvements:

- New traffic signal at Sam's Club / Lowe's access (2024 construction)
- Continuous raised median between Sam's Club access and S Duff Avenue (2024 construction)
- New sidewalk connections (2024 construction)
- Offset north/south left-turn lanes on S Duff Avenue (future construction)

Goals Achieved:

- Reduce delays and queuing
- Improve safety
- Improve multi-modal facilities



Single Point Urban Interchange

Improvements:

- Combine left-turn signalized movements to/from US 30
- Remove loop to eastbound US 30
- Additional turn lanes on/off US 30
- Consolidate access onto eastbound US 30
- Enhanced trail crossings at US 30 ramps

Features:

- Maintains direct access from eastbound US 30 to Billy Sunday Rd
- Maintains four traffic signals on S Duff Avenue in the study area
- Expandable to six lanes on S Duff Avenue

Goals Achieved:

- Reduce delays and queuing
- Improve safety
- Improve multi-modal facilities



Diverging Diamond Interchange

Improvements:

- Remove loop to eastbound US 30
- Additional turn lane off US 30
- Enhanced trail crossings at US 30 ramps
- Improve traffic flow turning to/from US 30 and entering US 30 mainline
- Consolidate access onto eastbound US 30

Features:

- North/south traffic flips to opposite side of the road through the interchange
- Maintains direct access from eastbound US 30 to Billy Sunday Road
- Expandable to six lanes on S Duff Avenue

Goals Achieved:

- Reduce delays and queuing
- Improve safety
- Improve multi-modal facilities

