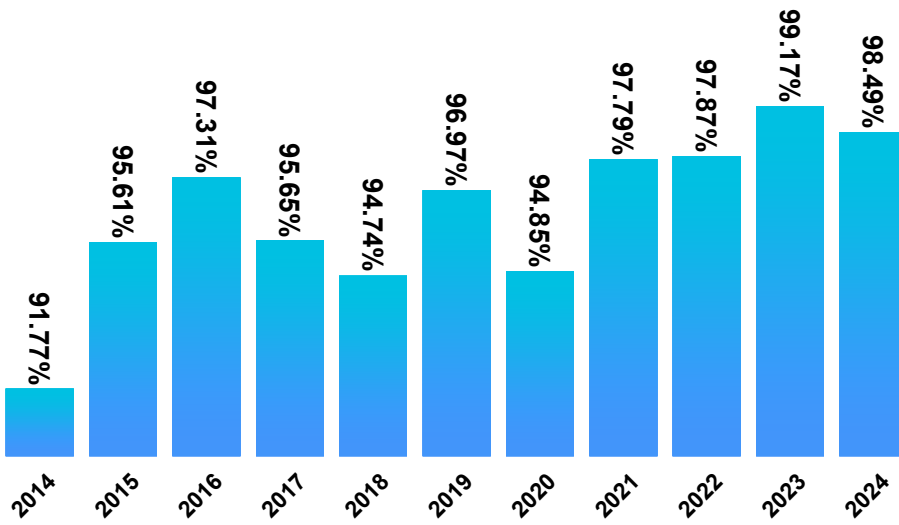


At the Ames Animal Shelter & Animal Control, we are proud to be a NO KILL, progressive animal care and adoption facility. We believe that euthanasia should only be considered when it would end the irremediable suffering of an animal or when the animal has been shown to pose a severe threat to the safety and well-being of our community. We believe in complete transparency, and so we use the most critical calculation available to determine our live release rate.

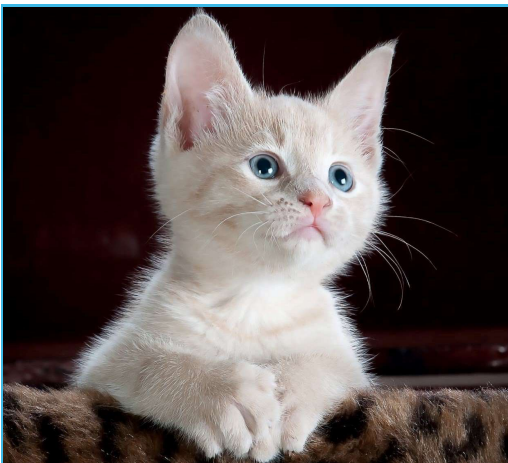
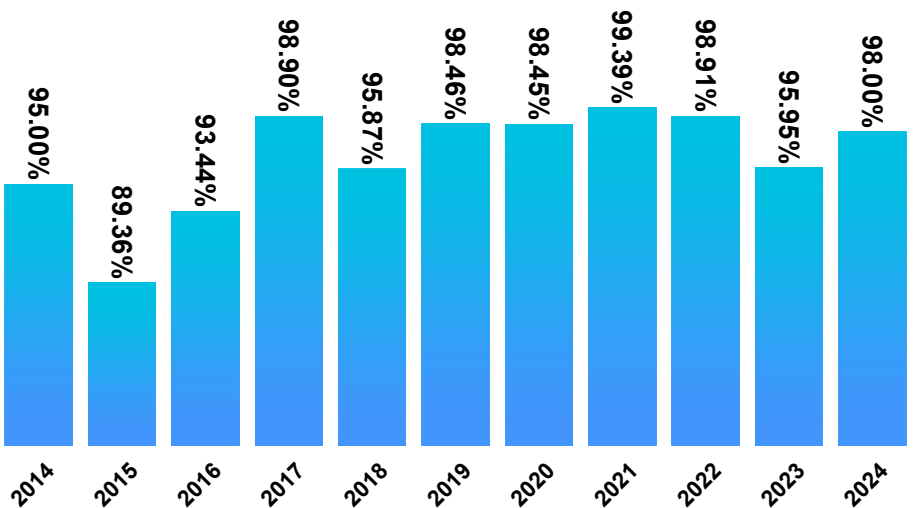
More information about completely transparent no kill calculations can be seen at

www.nokilladvocacycenter.org

Cats Live Release Rates



Kittens Live Release Rates

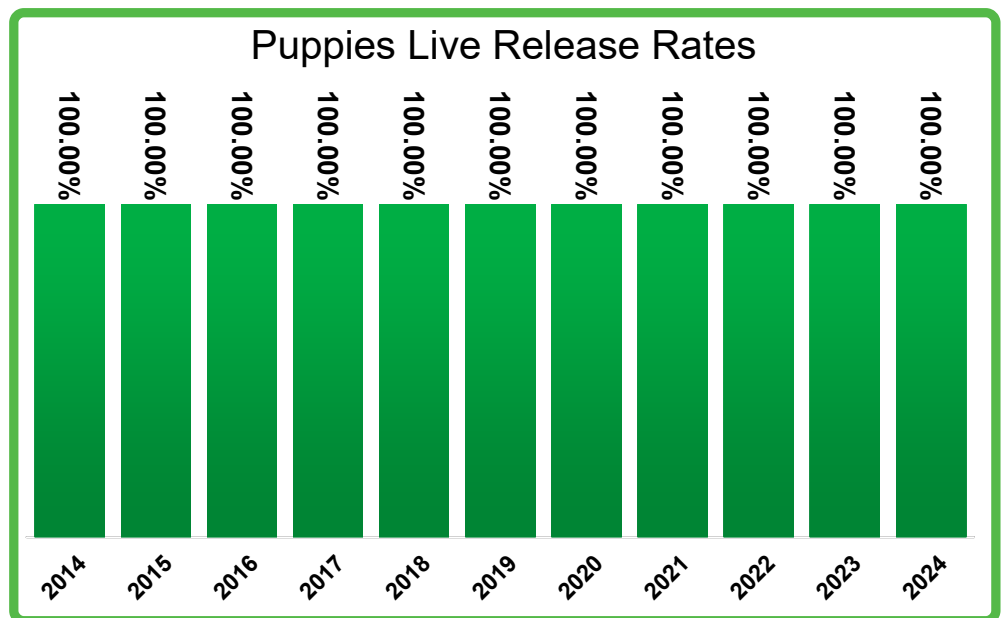
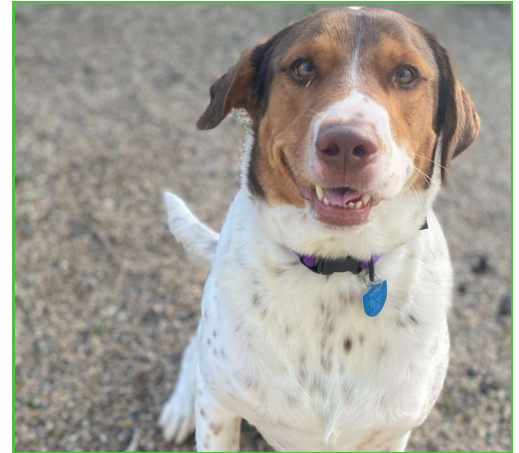
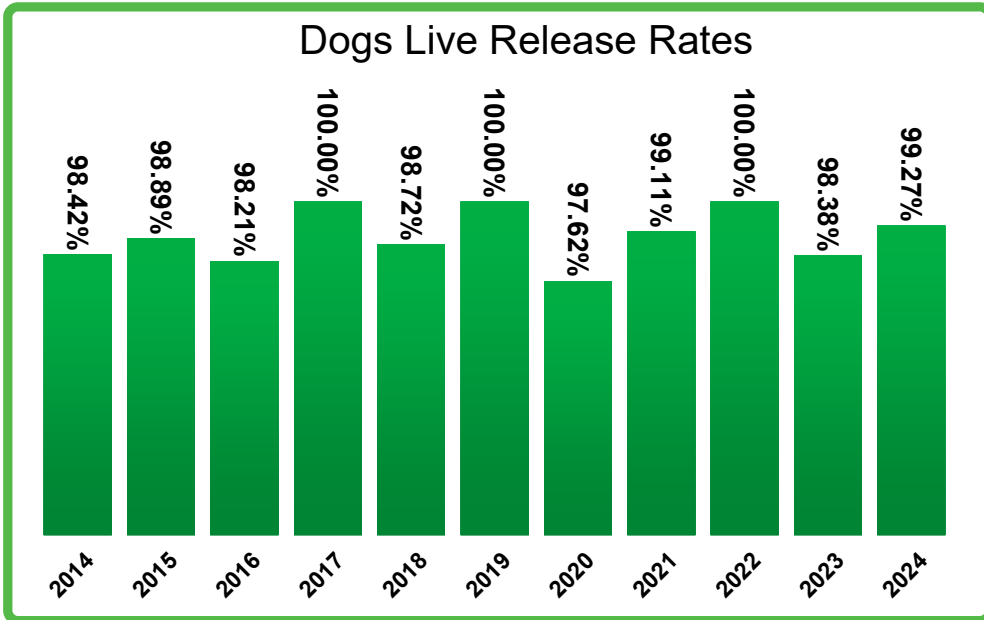


“Irremediable suffering” means an animal who has a poor or grave prognosis for being able to live without severe, unremitting physical pain even with prompt, necessary, and comprehensive veterinary care.

At the Ames Animal Shelter & Animal Control, we are proud to be a NO KILL, progressive animal care and adoption facility. We believe that euthanasia should only be considered when it would end the irremediable suffering of an animal or when the animal has been shown to pose a severe threat to the safety and well-being of our community. We believe in complete transparency, and so we use the most critical calculation available to determine our live release rate.

More information about completely transparent no kill calculations can be seen at

www.nokilladvocacycenter.org

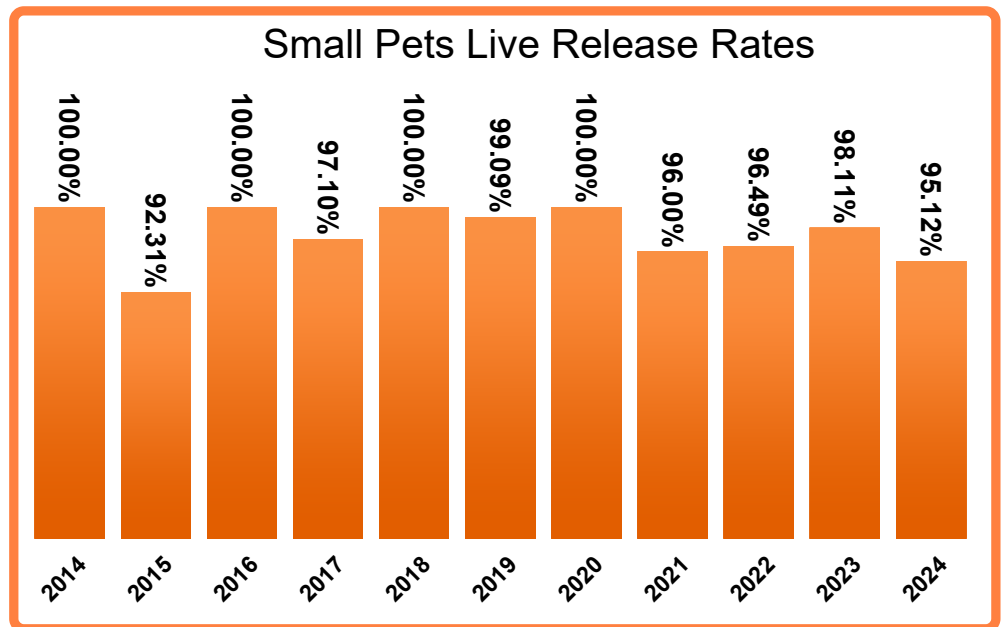
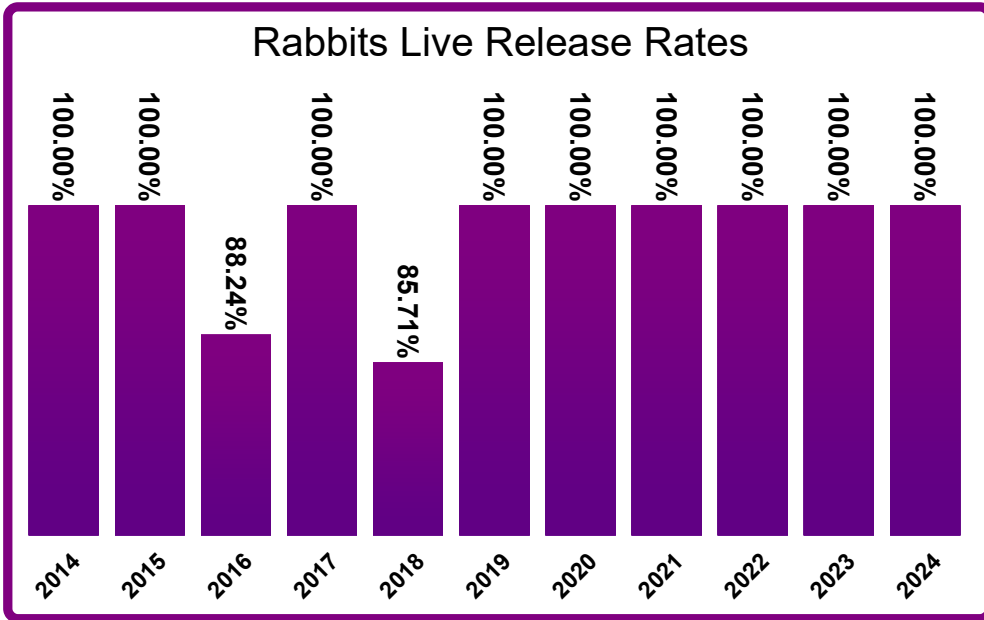


“Irremediable suffering” means an animal who has a poor or grave prognosis for being able to live without severe, unremitting physical pain even with prompt, necessary, and comprehensive veterinary care.

At the Ames Animal Shelter & Animal Control, we are proud to be a NO KILL, progressive animal care and adoption facility. We believe that euthanasia should only be considered when it would end the irremediable suffering of an animal or when the animal has been shown to pose a severe threat to the safety and well-being of our community. We believe in complete transparency, and so we use the most critical calculation available to determine our live release rate.

More information about completely transparent no kill calculations can be seen at

www.nokilladvocacycenter.org



“Irremediable suffering” means an animal who has a poor or grave prognosis for being able to live without severe, unremitting physical pain even with prompt, necessary, and comprehensive veterinary care.

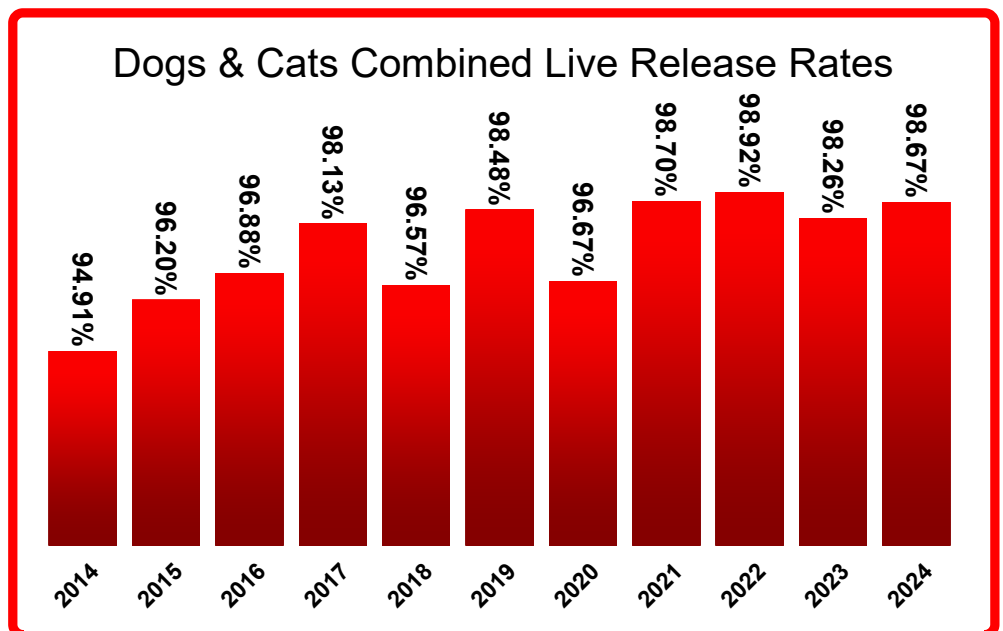
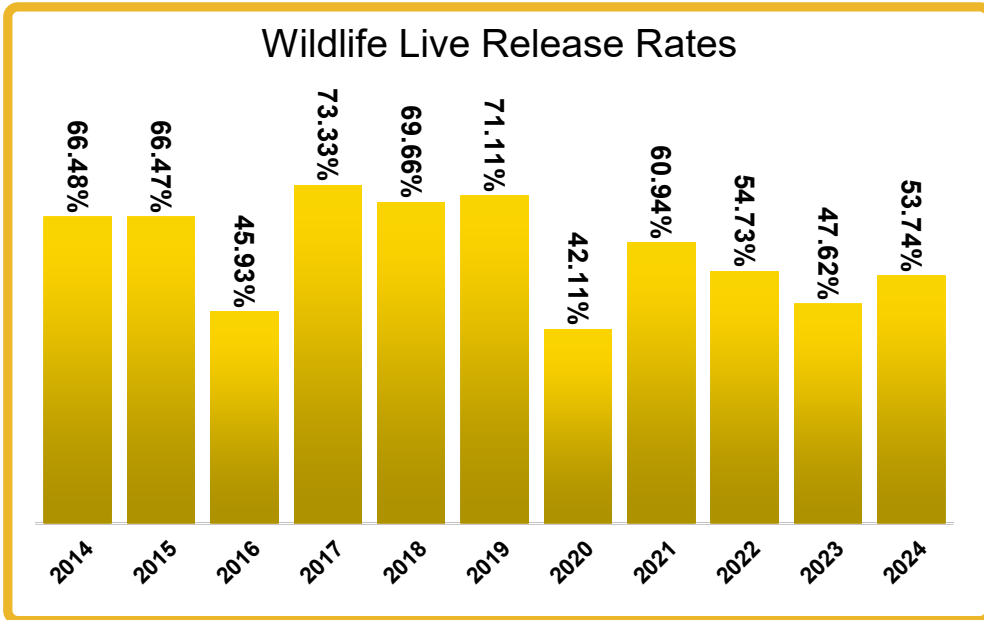
AMES ANIMAL SHELTER & ANIMAL CONTROL

Live Release Rates

At the Ames Animal Shelter & Animal Control, we are proud to be a NO KILL, progressive animal care and adoption facility. We believe that euthanasia should only be considered when it would end the irremediable suffering of an animal or when the animal has been shown to pose a severe threat to the safety and well-being of our community. We believe in complete transparency, and so we use the most critical calculation available to determine our live release rate.

More information about completely transparent no kill calculations can be seen at

www.nokilladvocacycenter.org



“Irremediable suffering” means an animal who has a poor or grave prognosis for being able to live without severe, unremitting physical pain even with prompt, necessary, and comprehensive veterinary care.